

Available to purchase
on the day!

(To purchase tickets shortly before boarding,
please proceed directly to the bus terminal)



Website・Tickets Purchase

JR Odekake net XR Bus Tour

<https://www.westjr.co.jp/global/en/travel/wowridefukui/>

Purchasing online : Happy Bus, tabiwa, and various travel agency websites

Sales counter : Fukui City Tourist Information Center

(inside Fukui City Tourism Center)

Runs daily when
the Dinosaur Museum is open!



Service Information

Service Route / Period (Revised October, 2025)	Timetable				One-Way Tax-Included Fare (adult) Half price for children (ages 12 and under)	Tour Duration
	Weekdays		Weekends/Holidays 12/25,26,29,30・1/2			
<div>Direct service!</div> <div>< Dinosaur Outbound Route ></div> <div>JR Fukui Station</div> <div>↓</div> <div>Fukui Prefectural Dinosaur Museum</div>	From Fukui Station	To Dinosaur Museum	From Fukui Station	To Dinosaur Museum	3,300yen	About 55 mins
	8:40 10:50 13:55	9:35 11:45 14:50	8:40 9:40 10:50 11:50 13:55 15:05	9:35 10:35 11:45 12:45 14:50 16:00		
<div>Direct service!</div> <div>< Dinosaur Return Route ></div> <div>Fukui Prefectural Dinosaur Museum</div> <div>↓</div> <div>JR Fukui Station</div>	From Dinosaur Museum	To Fukui Station	From Dinosaur Museum	To Fukui Station	*Oct 12 Nov 2,23 Dec 28-30 Jan 2,3,11 Feb 22 Mar 20-22:3,900 yen	
	12:00 15:05 17:10	12:55 16:00 18:05	12:00 13:50 15:05 16:15 17:10	12:55 14:45 16:00 17:10 18:05		

*Please visit the official website for details on the days when service is suspended and the most recent service status.

*Half-price fares for children (ages 12 and under). Free for infants who do not require a seat.

*The displayed XR content of the outbound and return journeys differs, and can be doubly enjoyed when using the round-trip service.

*Due to expected congestion around the Dinosaur Museum on specified days, passengers may be asked to change buses on some services to ensure on-time operation.

Coupons are being awarded to passengers!

*Only one coupon can be redeemed per purchase of 1,000 yen
or more including tax.

Outbound Trip

- 300 yen coupons for use at
CURU-F Fukui Station
- 5% off coupons are distributed for use at
the Souvenir shop FU RAPTOR
(in front of the Dinosaur Museum)!

Return Trip

- 300 yen coupons for use at
CURU-F Fukui Station

(Applicable to adults only. Subject to end without notice.)



@RAPTORFUKUI

Souvenir shop
FU RAPTOR

Explore original and
limited-edition treasures at
one of Japan's biggest
dinosaur goods stores!



@CURUF_FUKUI_STATION

Curu-f Fukui Station

For souvenirs and meals in
Fukui, visit Curu-f Fukui
Station inside Fukui
Station!

The direction of travel, displayed XR content, and service times can only be set freely on weekdays
The Group Private Usage Rate shall also be set!

*You can choose from six different content options, including a round trip to the Dinosaur Museum.

*For more details, please get in touch using the contact information below.

Languages

English/Chinese/Korean
(through earphone guidance)

Contact

Happy Bus Consortium Office

(Keifuku Bus) TEL.0776-54-3733

Business Hours: Weekdays 9:00 a.m.-5:00 p.m.

(Closed temporarily during Golden Week and New Year's holidays)

*Reservations cannot be made through this number.

Important Information

- Tour duration is subject to change depending on traffic conditions.
- Recommended for ages 3 and over.
- Access to your seat is only by stairs. The seating area is windowless. During the tour, the lighting will be dimmed, and there will also be flashing lights and loud sounds in places. If you have any concerns about the tour, please contact us in advance.
- Please refrain from eating and drinking (including the consumption of alcoholic beverages) on the bus, except to stay hydrated. Please also refrain from boarding with food or drink without a lid/cap.
- No stopovers will be made.
- There are no overhead compartments. Please store all luggage in the luggage compartments.
- Seating capacity is limited. If seats are available, tickets can also be purchased after boarding. Please ask a crew member.

[2025.10.1]

The new sensation XR bus tour WOWRIDE IKOSSA Fukui GO



Twice as much entertainment
on round-trips!

Fukui Station ↔ Dinosaur Museum
Entertainment direct bus



Experience
a virtual world
by simply sitting
on the bus!

**Board the Hokuriku Shinkansen
and XR Bus to the
dinosaur kingdom of Fukui!**



[~2026.3.31]

Dream bus with transforming windows that can take you anywhere!

Beautiful seasonal scenery, traditional culture, history, and even dinosaurs...

Fukui's attractions are projected onto windows with XR technology, creating a realistic virtual experience.

[Equipment such as VR goggles or a tablet are not required.]



The scenery outside...



Shazam!!



To virtual reality!

Convenient access to the Dinosaur Museum!

About 55mins

Fukui Station

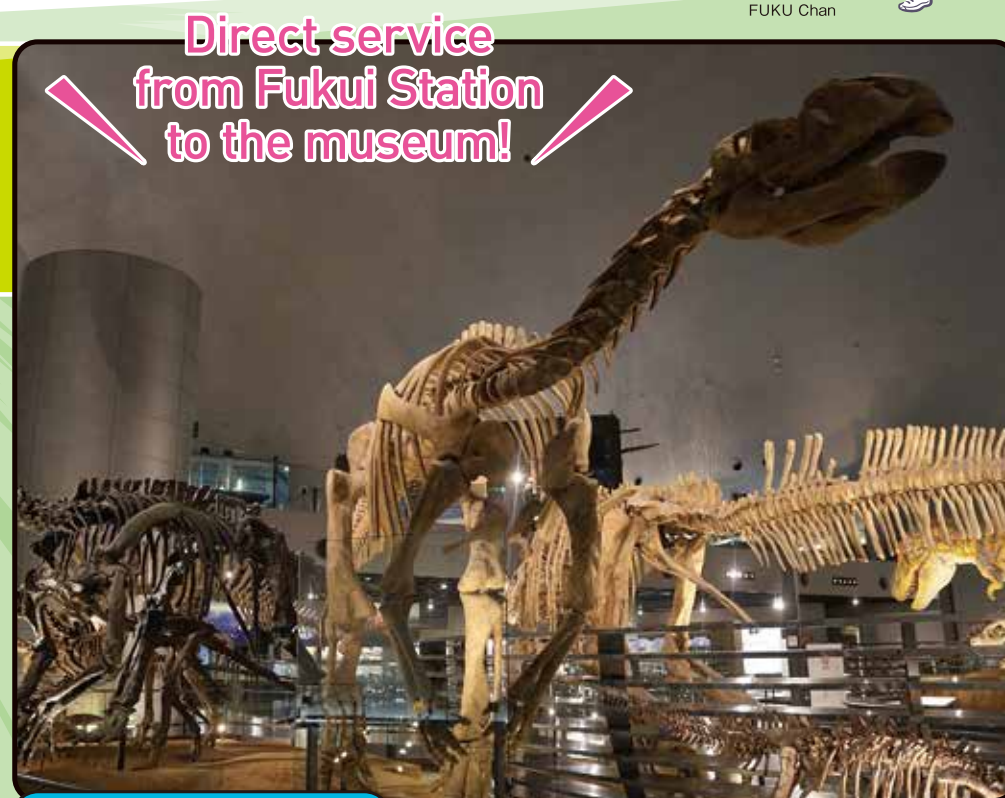
Fukui Prefectural Dinosaur Museum Outbound
One of the three major dinosaur museums in the world

Route
Dinosaur Outbound

As Indy, a dinosaur-loving fossil hunter (Tsubasa Imai), talks about all things dinosaurs, the breaking news announces "Dinosaurs spotted in Fukui!" Will Indy be able to protect Fukui from the dinosaurs?!

Route
Dinosaur Return

Dinosaur Kingdom, where dinosaurs dwell, and Fukui's best sightseeing information are brought to you by "Juratic"!



Dinosaur Museum

Children and adults alike can enjoy viewing 50 dinosaur skeletons, thousands of specimens on display, large reconstructed dioramas, as well as videos in the expansive 4,500m² exhibition room.

Direct service from Fukui Station to the museum!



Directed by

Yukihiko Tsutsumi

Director and filmmaker

Packed with Fukui's timeless charms. Enjoy a the next-generation tourism experience of Fukui, where dinosaurs roamed, home to one of the greatest cultural cities of the Warring States period, the prosperity of the Kitamaebune trades, Tojinbo, Awara Onsen, and many other attractions!



©Yusuke Uchida(Ucci)

Script by

Tetsuhiro Ikeda, Shin Takeda

Starring

Dinosaur Outbound

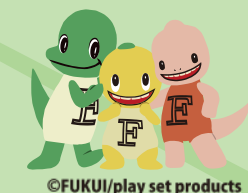
Tsubasa Imai, Yoichi Nukumizu, and others

Kenta Nakamura and Nene Masuya (FBC Announcers)
Manaha Tanabe (Fukui Television Announcer) and others



Dinosaur Return

Juratic
Tsubasa Imai, Yoichi Nukumizu, and others



©FUKUI/play set products



Illustrator: Satoru Nakamura (from Fukui Prefecture)

We depicted a story that interweaves many of the natural features and specialties that Fukui has to offer. It features a fashionable and cute style that appeals to men and women of all ages.

Check out the wrapping!

