

# Osaka Station City Spring Promotion About the Launch of *Green Station Park*

February 13, 2019  
West Japan Railway Company  
Osaka Terminal Co., Ltd.  
Osaka Station City Liaison Council

## Green Station Park

### - A green, relaxing lawn comes to Osaka Station. -

A relaxing lawn will appear in Toki-no-Hiroba Plaza at the top of Osaka Station. Furnishings to relax on will be set up in the plaza, along with a dedicated kid's space. Both kids and adults will be able enjoy spending time here doing whatever they please.

Please come and enjoy Green Station Park at Osaka Station City this spring. It feels just like playing in a real park.

#### 1. Period Open

March 1 (Fri.) - June 9, 2019 (Sun.) \*101 Days

#### 2. Venue

Toki-no-Hiroba Plaza, 5F, Osaka Station City, JR Osaka Station  
(Plaza Hours: 8:00 a.m. - 11:30 p.m.)

#### 3. Official Website

<http://osakastationcity.com/gsp/>

#### 4. Park Details

##### (1) Decorations

###### • Plaza Decorations

The artificial lawn set up across the entire park is a big hit every year, and gives the space a park-like atmosphere. The lawn is great for a variety of uses, whether enjoying a break while shopping or snapping a photo.

(\*Artificial Lawn Area: Approximately 1,700m<sup>2</sup>)

###### • Dedicated Kid's Space

This year marks the addition of a small kid's space that will be set up for kids to play in. (For pre-school aged children 0-6)The area is covered, allowing for carefree play regardless of rain or other weather conditions. (Free)

##### (2) Complementary Gift Campaign

###### • Lunch Boxes

An area will be set up within Toki-no-Hiroba Plaza where you can have your Green Station Park flier stamped. In addition, a complementary lunch box present will be given to those that show a shopping receipt of over 2,000 yen (including tax) to the information counter on the third floor.

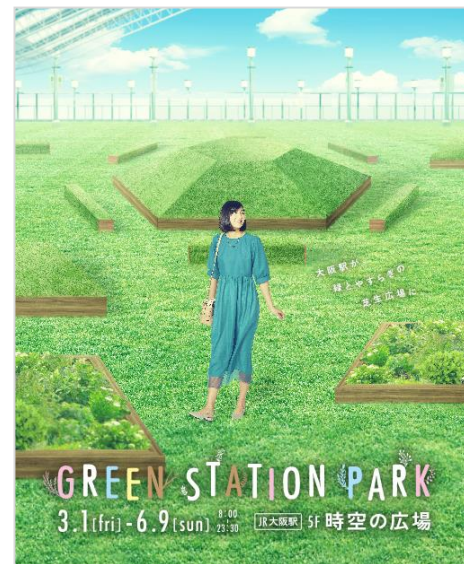
###### • Potted Plants

Show a shopping receipt of over 1,000 yen (including tax) to receive two potted plants (displayed in the Toki-no-Hiroba Plaza) as a present.

##### (3) Stage Events and Workshops

Stage events and workshops are planned for weekends and holidays while the park is in operation.

A Lego® kid's event will take place from April onwards. In addition, a sports event with Cerezo Osaka is also being planned.



Main Image



Sample Image of Entire Venue

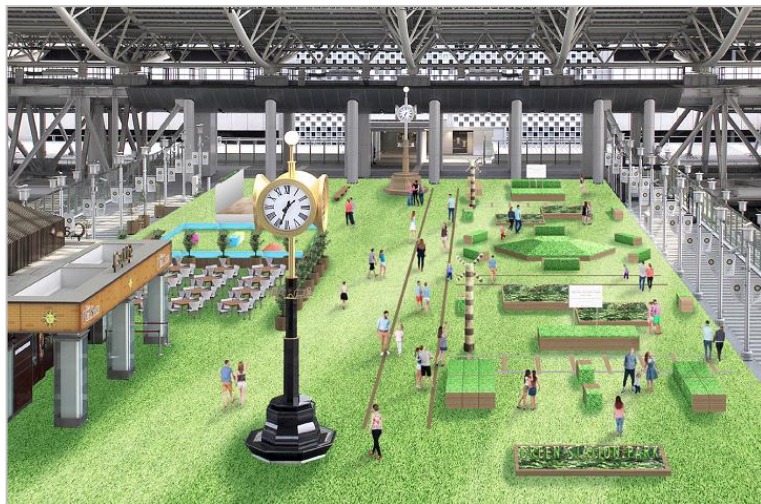
\*See the separate sheet for more information.

# Decorations

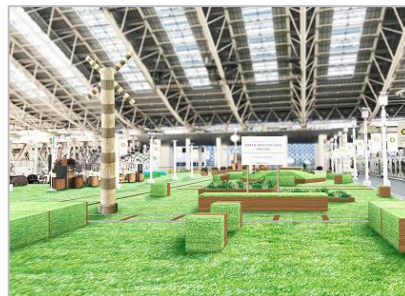
\*Photos and illustrations posted are sample images.

Separate Attachment

## ○ Plaza Decorations



Artificial lawn is spread out on the entire plaza, giving the space a park-like atmosphere. Playing in the plaza feels like playing in the park.



Numerous relaxing spaces are set up to be freely used by the many visitors.

## ○ Dedicated Kid's Space



Cushioned play equipment is set up within the space, allowing children to play freely.

\*Use of certain areas will be restricted on some dates.

# Complementary Gift Campaign

## ○ Lunch Boxes

While we have prepared a large number of lunch boxes, please note that the campaign will end in the unlikely event that they run out.

- (Period) • March 1 (Fri.) - June 6 (Sun.), 2019
- (Contents) • An area will be set up within Toki-no-Hiroba Plaza where you can have your Green Station Park flier stamped during the duration of the event. Receive one lunch box as a present by presenting the flier reception alongside a receipt of 2,000 yen or more (sum total, including tax) from shopping or eating at establishments in Osaka Station City.

- (Item Presented) • Stamped Flier, Receipt (Sum Total of 2,000 Yen and Up (Including Tax))
- (Registration Area) • Osaka Station City Information, North Gate Building 3F

\*Fliers will be available in Toki-no-Hiroba Plaza.



**Lunch Box**

\* No other items are included besides the lunch box.

(10:00 a.m. - 8:00 p.m.)

## ○ Potted Plants

Campaign ends when potted plants run out.

- (Time and Date) • March 31 (Sun.), 2019: ①From 1:00 p.m. ②From 2:30 p.m. ③From 4:00 p.m. ④From 5:30 p.m.
- (Contents) • \*100 people each, first-come-first-serve  
Between March 1 (Fri.) to March 31 (Sun.), a total of 400 visitors will receive two potted plants as a present (displayed in the Toki-no-Hiroba Plaza) by presenting reception with a receipt of 1,000 yen or more (sum total, including tax) from shopping or eating at establishments in Osaka Station City.

- (Item Presented) • Receipt (Sum Total of 1,000 Yen and Up (Including Tax))  
Stage Area, Toki-no-Hiroba Plaza, 5F



**Potted Plant**

# Station Events and Workshops

- (Contents) • Stage events and workshops presented by Osaka Station City stores are planned for weekends and holidays while the park is in operation.
- From April onwards, a space will be set up for kids to play with popular Lego® blocks. Sports-related events are also being planned, including a talk show and soccer session with Cerezo Osaka.

\*Upon confirmation, details will be announced via our official website.

Toki-no-Hiroba Plaza, 5F

(Venue Area)

<Osaka Station City Liaison Council Member Companies and Organizations> \*In no particular order.  
JR West Japan SC Development (Co., Ltd.), Osaka Station City Cinema, Konami Sports Club (Co., Ltd.), Esprit (Inc.)  
Support Plaza Association, Daimaru Matsuzakaya (Co., Ltd.), Hotel Granvia Osaka (Co., Ltd.), South Gate Building Restaurant Association,  
JR West Japan Daily Service Net (Co., Ltd.), JR West Japan Osaka Development (Co., Ltd.), West Japan Railway Company (Co., Ltd.), Osaka Terminal Building (Co., Ltd.)