

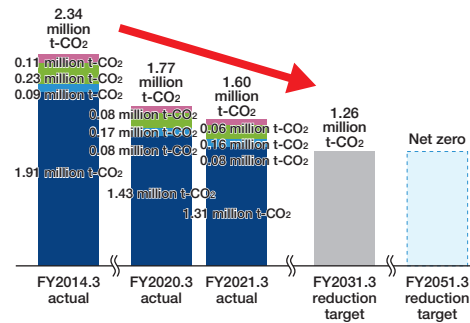
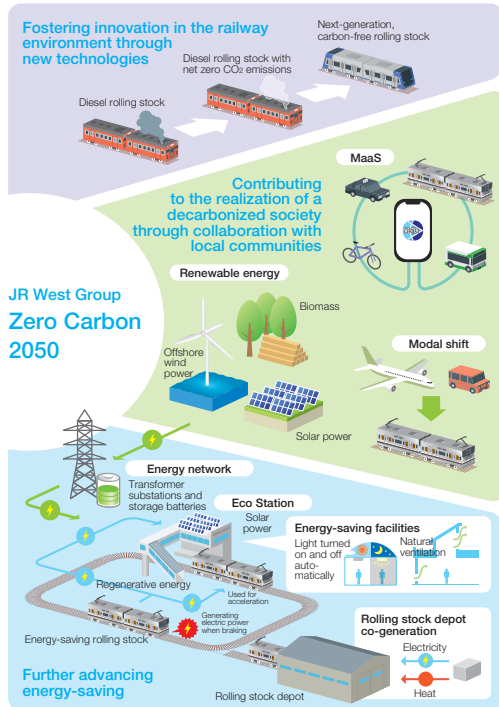
Strategy

# Environment

We have formulated the JR West Group Zero Carbon 2050, a long-term environmental goal with the objective of achieving net zero CO<sub>2</sub> emissions for the entire JR West Group by 2050. We have also declared support of the recommendations of the Task Force on Climate-related Financial Disclosures (TCFD) and disclose information based on the recommendations.

## Long-term environmental goal: JR West Group Zero Carbon 2050

We will aim for net zero CO<sub>2</sub> emissions on a Groupwide basis in 2050. To that end, we will strive to reduce CO<sub>2</sub> emissions by 46% in FY2031.3 (vs. FY2014.3).



\* The decrease in FY2021.3 includes the impact of COVID-19.

Legend: ■ JR West (non-consolidated) Scope 1, ■ JR West (non-consolidated) Scope 2, ■ Group companies Scope 1, ■ Group companies Scope 2. Note: Some totals do not match due to numerical adjustments.

## Environmental targets

We are taking action to achieve the environmental targets set in the JR West Group Medium-Term Management Plan 2022 by continuing to reduce energy usage by our railway vehicles and station facilities, promote energy-efficient train operation, and advance recycling to contribute to creating a recycling-oriented society, along with other initiatives.

Environmental targets	FY2021.3 actual	FY2023.3 targets
(I) Energy consumption intensity* (vs. FY 2014.3)	-3.8%	-3%
(II) Percentage of energy-efficient rolling stock	89.5%	88%
(III) Station and onboard garbage (recyclable) recycling rate	99.5%	96%
(IV) Railway material recycling rate		
(IV) Facility construction	98.0%	97%
(IV) Rolling stock	95.1%	92%
(V) Promote environmentally friendly stations and office facilities		

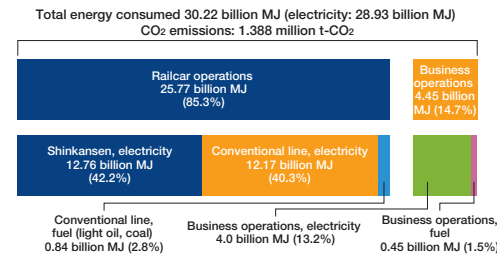
\* One unit is the amount of energy used to move a rolling stock one kilometer.

## Environmental Impact of Business Activities

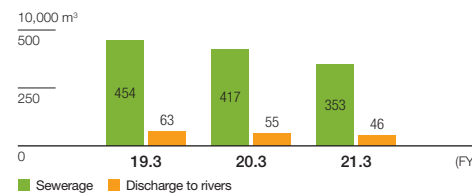
### CO<sub>2</sub> Supply Chain Emissions: JR-West (non-consolidated)

Item	CO <sub>2</sub> emissions (t-CO <sub>2</sub> )		
	FY2019.3	FY2020.3	FY2021.3
Total CO <sub>2</sub> emissions (Scope 1, 2, and 3)	3,358,497	3,504,200	3,259,125
Scope 1	86,925	85,400	85,500
Scope 2	1,629,385	1,434,600	1,303,000
Scope 3	1,642,187	1,984,200	1,870,625

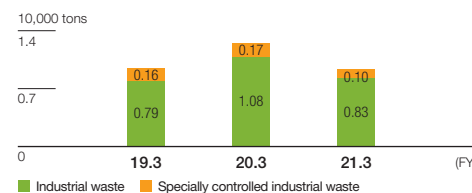
### JR-West overall energy consumption (FY2021.3, non-consolidated)



### OUTPUT: Volume of wastewater JR West (non-consolidated)

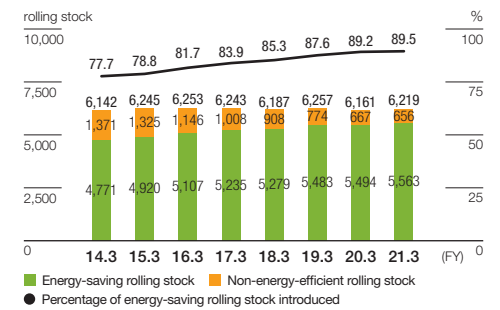


### OUTPUT: Industrial Waste Emissions (by general/special control) JR West (non-consolidated)

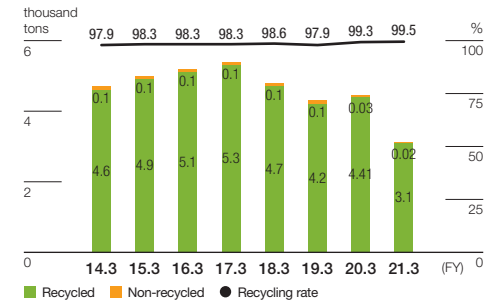


## Energy and Resource Conservation

### Introduction of Energy-Saving Rolling Stock



### Amount of Station and Train Garbage (recyclable garbage) Generated and Recycling Rate



### Breakdown of Processing of Railroad Materials Generated (equipment construction) and Recycling Rate

