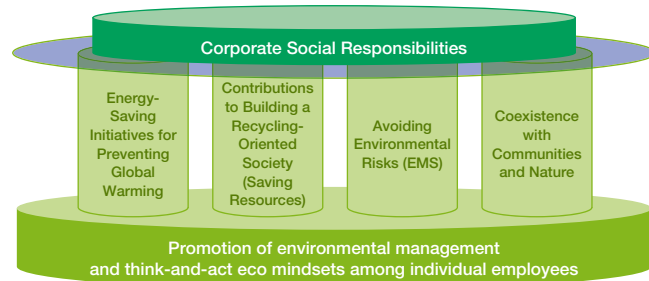


Other

# Environmental Initiatives

## BASIC APPROACH

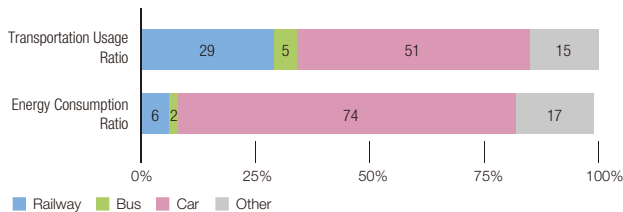
JR-West, working in unison with its Group companies, will endeavor to protect the global environment and contribute to the realization of a society in which sustainable development is possible.



## THE ENVIRONMENTALLY FRIENDLY NATURE OF RAILWAYS

### Transportation Usage Ratio and Energy Consumption Ratio of Domestic Modes of Transportation

(FY2010.3, NATIONWIDE)

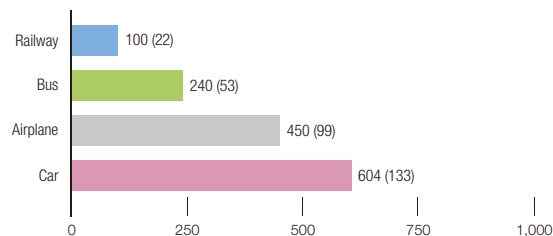


Source: Summary of Transportation Statistics, Transport Research and Statistics Office, Ministry of Land, Infrastructure, Transport and Tourism  
The GHGs Emissions Data of Japan, Greenhouse Gas Inventory Office of Japan

### CO<sub>2</sub> Emissions by Mode of Transportation (tourists)

(FY2015.3)

Value for railway scaled to 100



Source: Ministry of Land, Infrastructure, Transport and Tourism homepage  
Numbers in parentheses are actual CO<sub>2</sub> emissions volumes (g-CO<sub>2</sub> / passenger-kilometers)

## ENVIRONMENT TARGETS

In order to further increase the environmental advantages of railways, the JR-West Group announced environment targets in its Medium-Term Management Plan 2017. We are working toward adopting energy-saving rolling stock and facilities and prioritizing energy- and resource-saving initiatives at stations and offices.

Item	Fiscal 2015.3 Actual	Fiscal 2018.3 Target
Energy consumption volume (entire company)(vs. fiscal 2011.3)	(2%)	(2%)* <sup>2,3</sup>
Same as above (for conventional line operation, station offices, etc.) (vs. fiscal 2011.3)	(6%)	(9%)* <sup>2</sup>
Ratio of energy-saving rolling stock	79%	83%
Energy consumption rate (vs. fiscal 2011.3)* <sup>1</sup>	(3%)	(3%)* <sup>2,3</sup>
Station and train garbage (recyclable) recycling rate	98%	96% or greater* <sup>2</sup>
Railway material recycling rate	Facility construction	99%
	Rolling stock	91% or greater

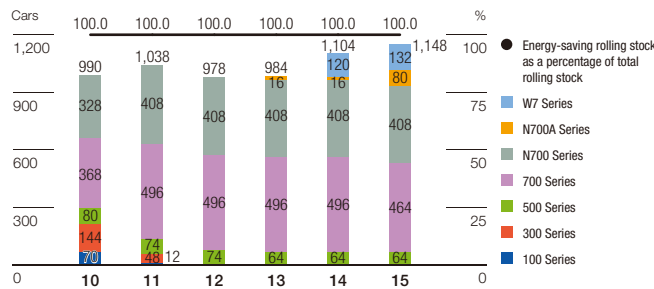
\*1 The energy consumption rate is the amount of energy consumed per rolling stock-kilometer (MJ/Rolling stock-km).

\*2 Included in the Medium-Term Management Plan.

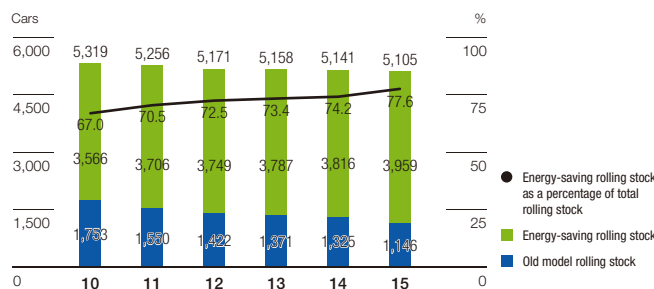
\*3 The fiscal 2018.3 target considers the estimated increase in energy consumption related to the start of Hokuriku Shinkansen operations.

Note: figures in parentheses ( ) are negative values.

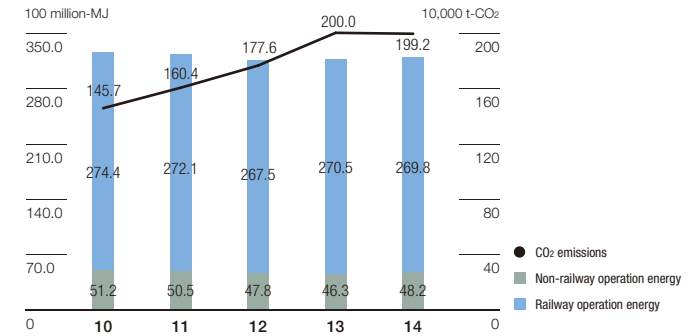
## STATUS OF ADOPTING ENERGY-SAVING ROLLING STOCK (Shinkansen)



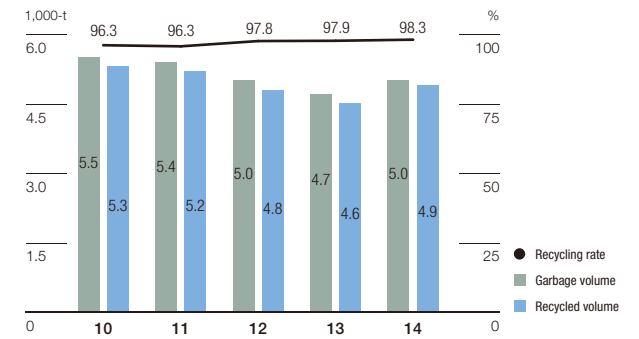
## STATUS OF ADOPTING ENERGY-SAVING ROLLING STOCK (Conventional Lines)



## ENERGY CONSUMPTION AND CO<sub>2</sub> EMISSIONS FROM BUSINESS ACTIVITIES



## STATION AND TRAIN GARBAGE (RECYCLABLE) RECYCLING TRENDS



## RAILWAY MATERIAL RECYCLING TRENDS

