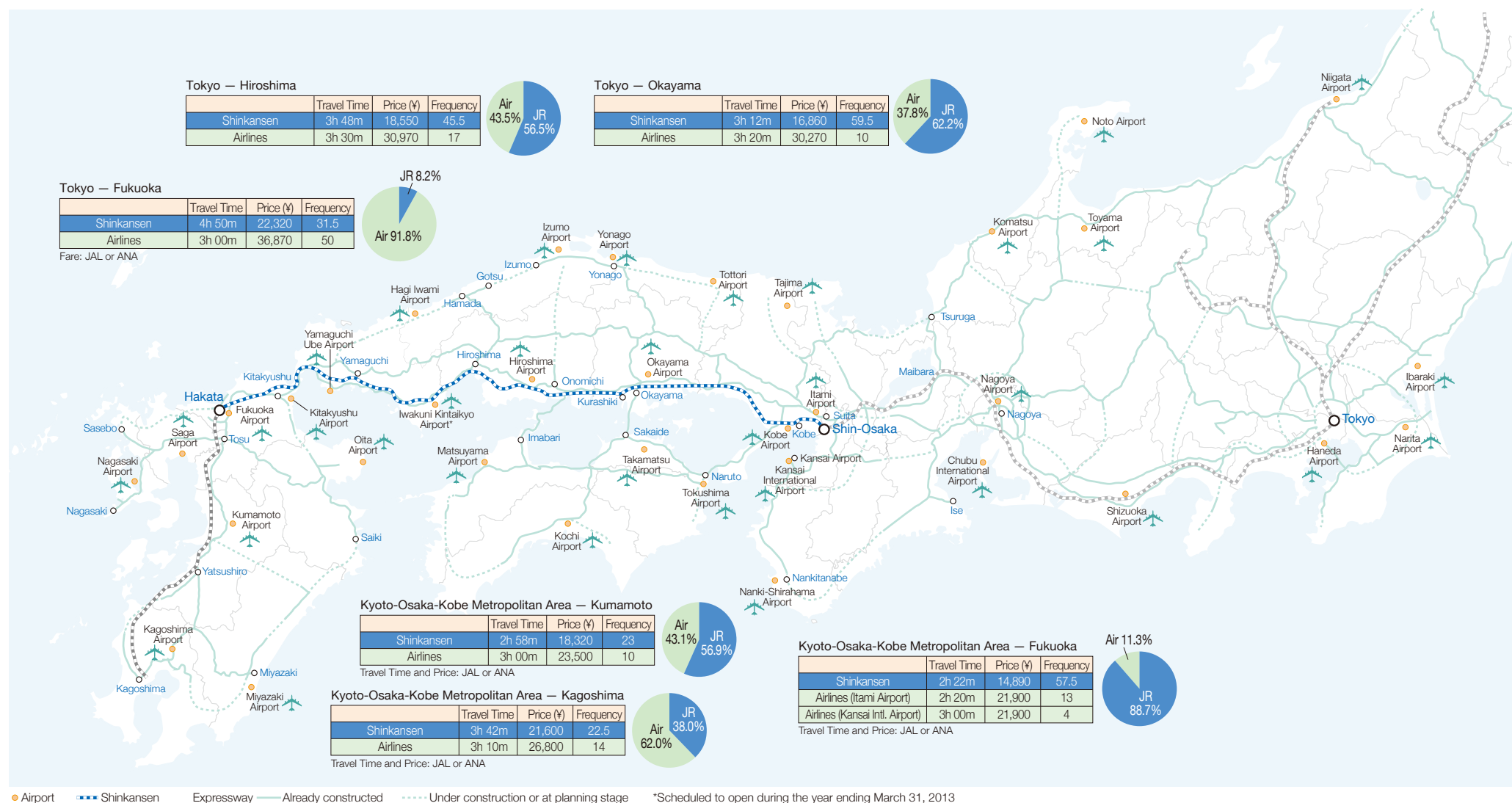


## Operating Environment

Airport and Expressway Networks As of April 1, 2012

## Notes

1. Travel time for the Shinkansen is the shortest on Nozomi and Mizuho trains. For airlines, in addition to the travel time required from the airport to the city center, the calculation includes 10 minutes travel time between the Airport Limousine Bus or nearest station to the boarding gate, 20 minutes waiting time at the boarding gate, and 10 minutes from the gate to the Airport Limousine Bus or station nearest the airport.

2. Fare for the Shinkansen is the regular Nozomi fare, and for airlines the regular fare.

3. The cost when using Haneda Airport includes the passenger facilities usage fee for airport (¥170 for Haneda).

4. Travel time for the airlines is estimates.