

Come on a journey of connections and
write a new chapter in your own personal story.

Embrace your freedom, discover the unexpected,
and enjoy a new level of comfort.

Feel safe and secure wherever you are,
doing things your own way.
Explore interactions, make new discoveries,
and share a smile along the way.

By enhancing connections and lifestyles,
we aim to forge a future that stirs the heart.

Connect more. Spring into the future.



Table of Contents

1	Our values	3	4	A foundation for value creation	
				Sustainability initiatives	53
				Coexistence with communities	57
				Global environment	59
				Human resource strategy	75
				Message from the CFO	85
				Corporate governance	89
				Special roundtable	97
				Internal control system	101
				Group risk management	102
				Corporate ethics and human rights	105
				Information security	111
2	President's message	7	5	Data	
				Non-financial data (environmental)	115
				Third-party assurance	116
				Non-financial data (human resources)	117
				11-year financial summary	119
				Financial statements	121
3	Value creation process				
	Value creation for realizing the Long-Term Vision	13			
	Medium-Term Management Plan 2025 key strategies				
	Improve safety of railways	21			
	Revitalize and restructure core businesses	29			
	Further evolve real estate and city development	39			
	Develop diverse services via digital strategy	41			
	Create new businesses	43			
	Special feature				
	Innovation to help realize our Long-Term Vision	47			
	Special feature				
	Concerted Group effort to capture inbound tourism demand	51			

Editorial policy

This report has been published in order to provide information about JR-West Group's various initiatives and the value they bring, and to communicate with our wide range of stakeholders.

The information provided herein focuses on those areas we particularly wish to highlight. For further details of our initiatives, please refer to the relevant pages of our website.

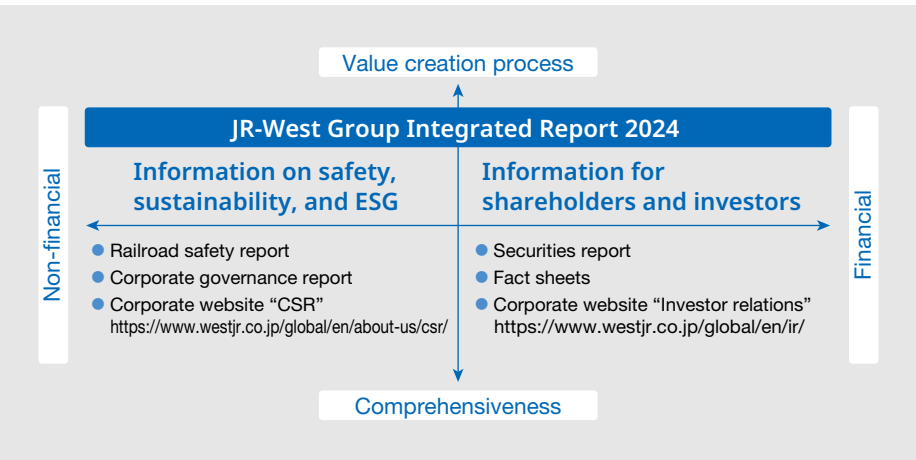
System of information disclosure

Applicable period
In principle, April 2023 to March 2024

Main reference guidelines

- Integrated Reporting Framework (Value Reporting Foundation [VRF])
- Guidance for Collaborative Value Creation 2.0 (Ministry of Economy, Trade and Industry [METI], Japan)

Scope
In principle, JR-West Group (including some initiatives at the non-consolidated level)



Cautionary disclaimer regarding forecasts

This report contains forward-looking statements that are based on the JR-West Group's current plans, assumptions, estimates, and projections about its business, industry, and capital markets around the world.

Pronouncements related to these forward-looking statements are subject to various risks and uncertainties. Generally, these forward-looking statements use future-oriented terminology such as "may," "will," "expect," "anticipate," "estimate," "plan," or similar words. These statements discuss future expectations, identify strategies, contain projections of results of operations or of the JR-West Group's financial condition, or state other forward-looking information.

Known or unknown risks, uncertainties, and other factors could cause the actual results to differ materially from those contained in any forward-looking statements. The JR-West Group cannot promise that the expectations expressed in these forward-looking statements will turn out to be correct. The JR-West Group's actual results could be materially different from and worse than expectations. Important risks and factors that could cause actual results to be materially different from expectations include, but are not limited to:

- Expenses, liability, loss of revenue, or adverse publicity associated with property or casualty losses;
- Economic downturn, deflation, and population decreases;
- Adverse changes in laws, regulations, and government policies in Japan;
- Service improvements, price reductions, and other strategies undertaken by competitors such as other passenger railway and airline companies;
- Outbreaks and epidemics of infectious diseases;
- Earthquake and other natural disaster risks; and failure of computer telecommunications systems disrupting railway or other operations.

All forward-looking statements in this report are made based on information available to the JR-West Group as of October 31, 2024, and the JR-West Group does not undertake to update or revise any of its forward-looking statements or reflect future events or circumstances.