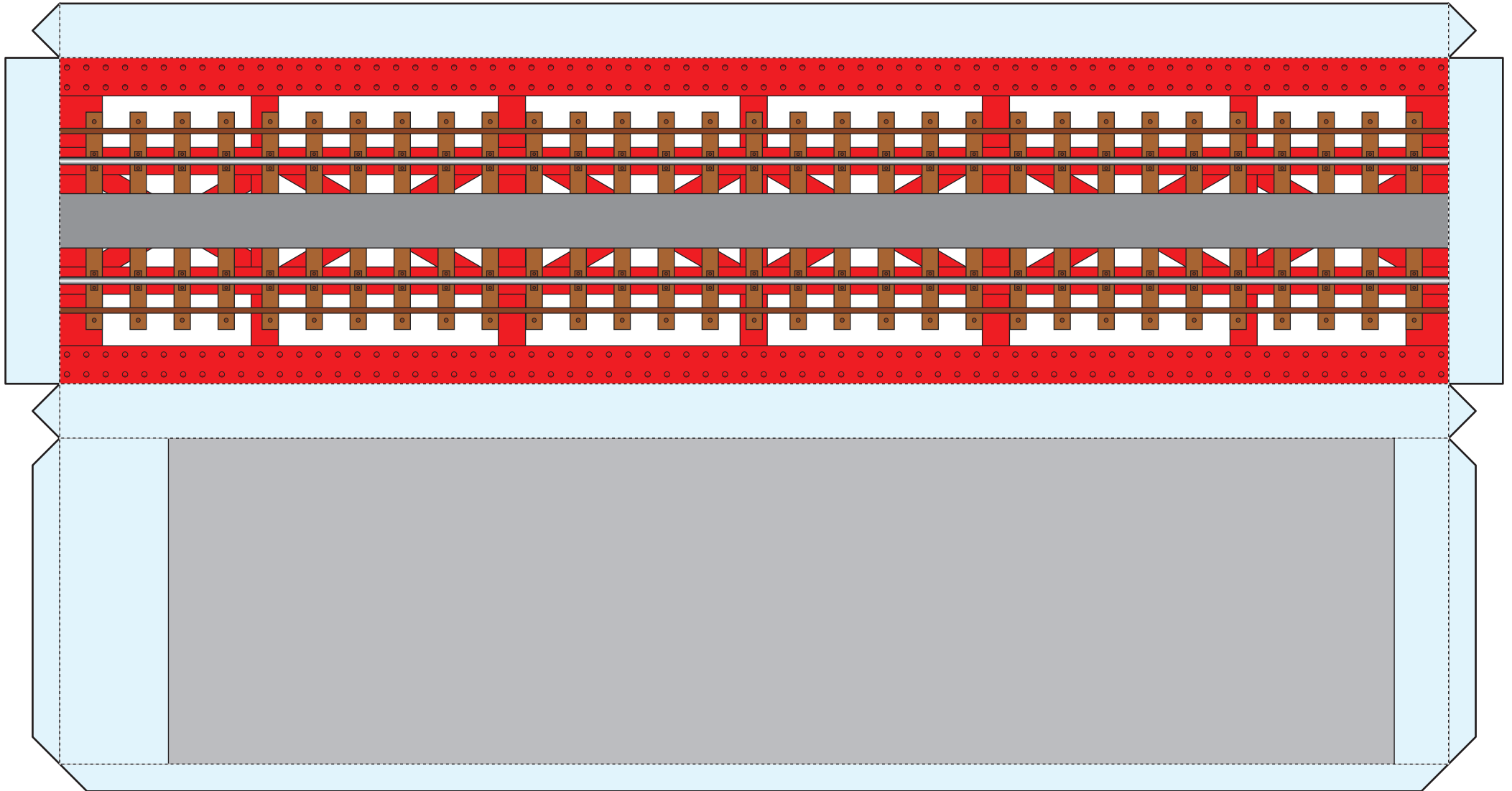
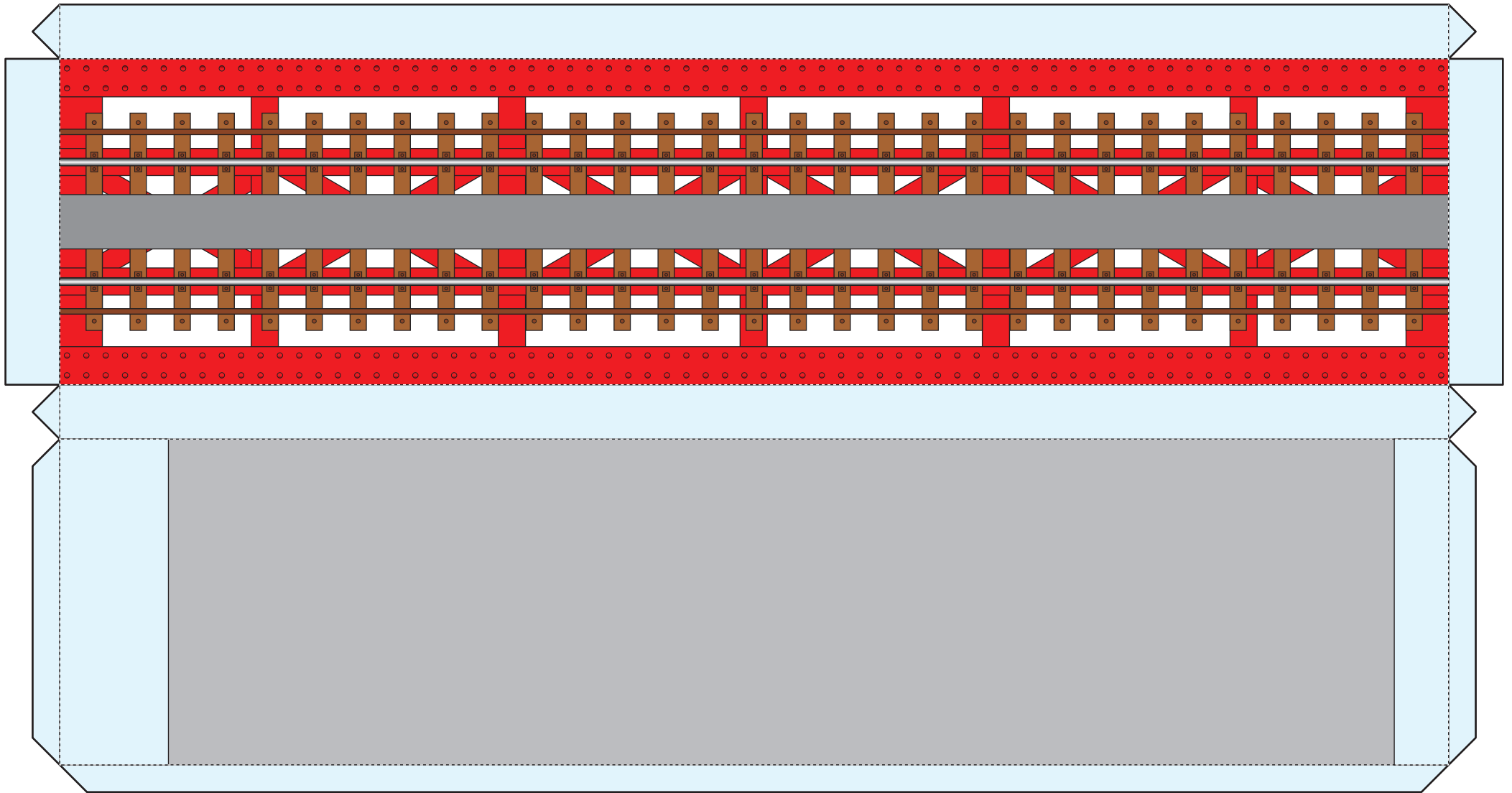


—— 切り取り 山折り 谷折り □ のりしろ キリヌキ 切り抜く

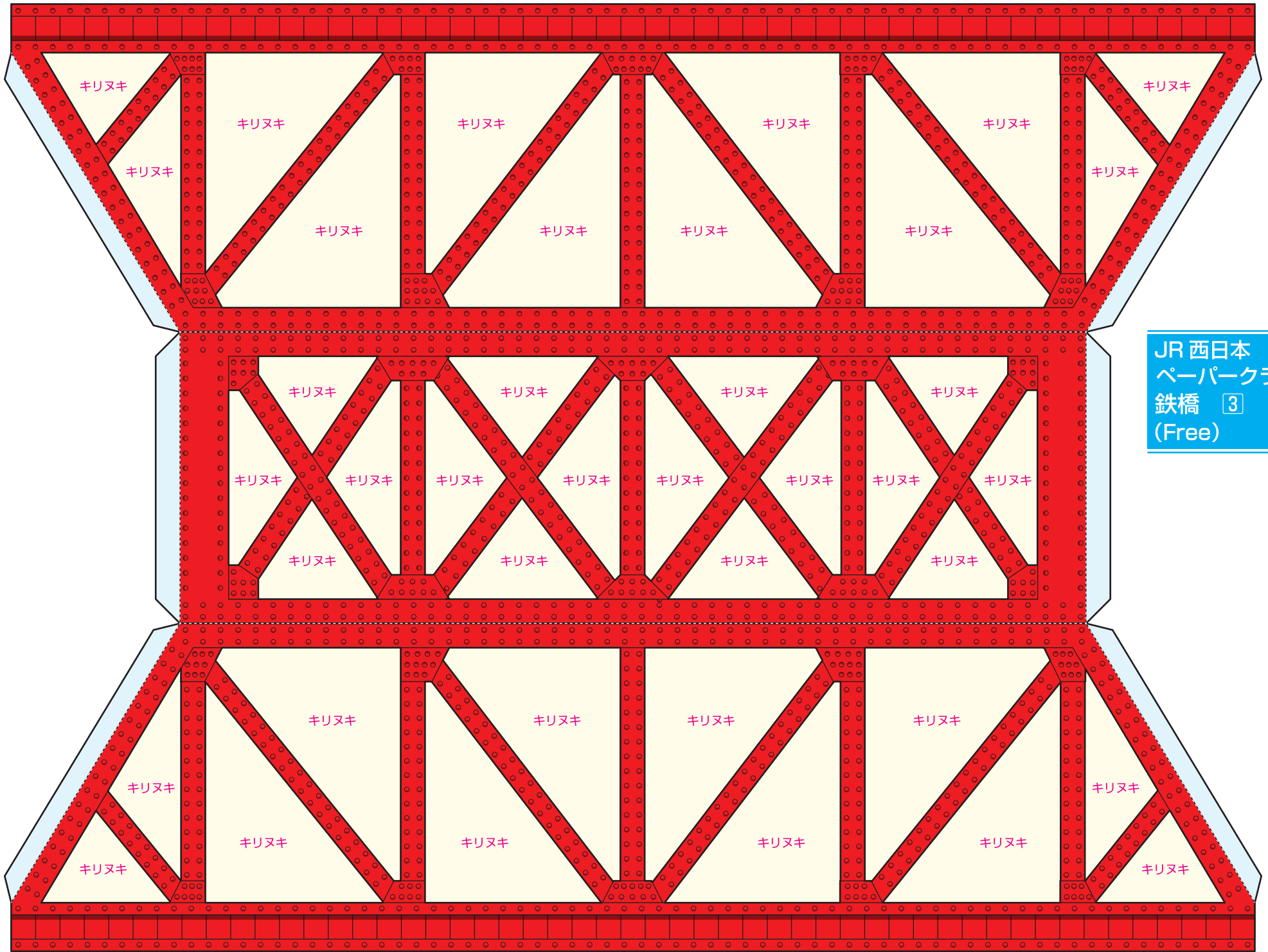
A



A

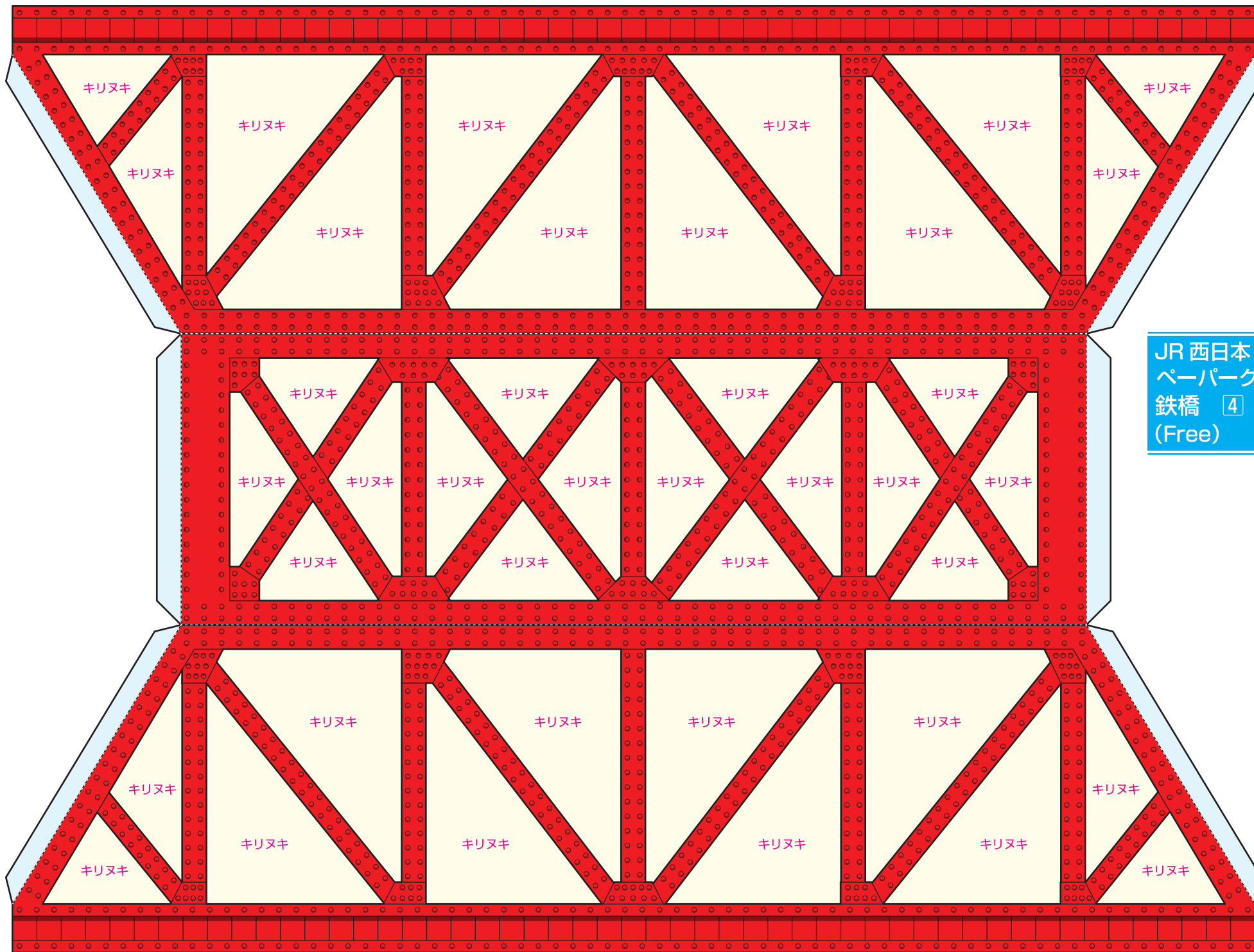


B



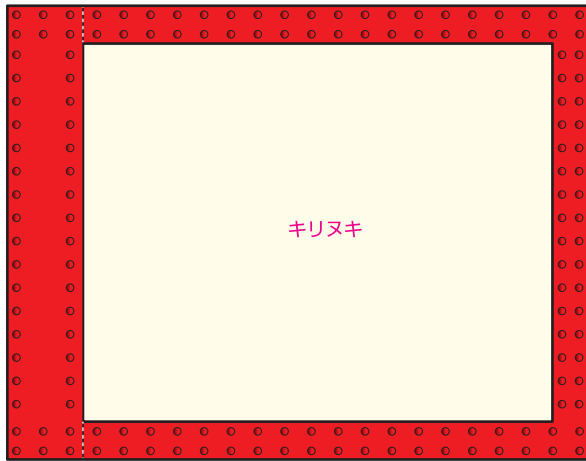
JR 西日本
ペーパークラフト
鉄橋 ③
(Free)

B

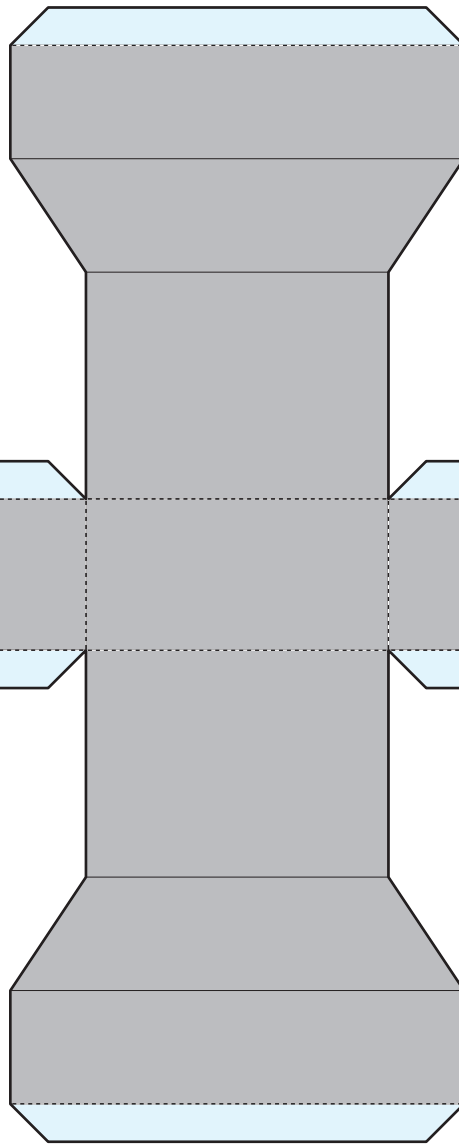


JR 西日本
ペーパークラフト
鉄橋 4
(Free)

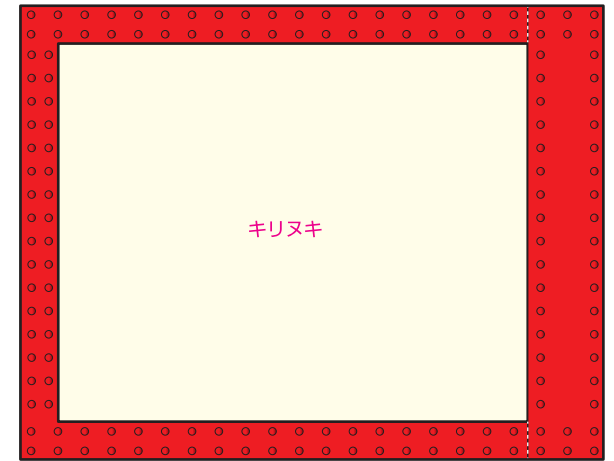
C



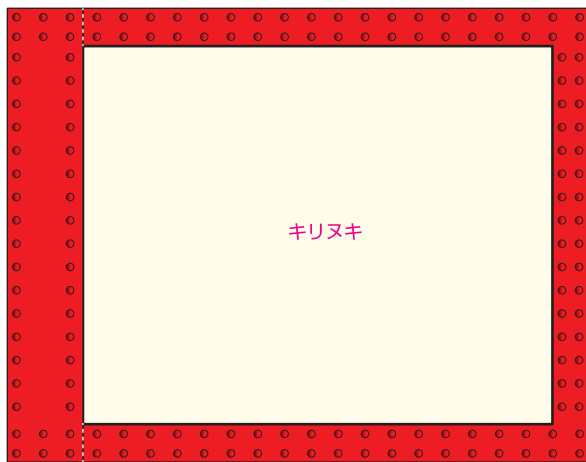
D



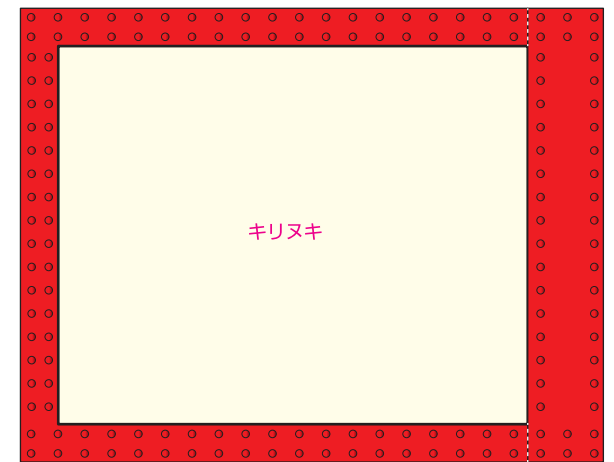
C

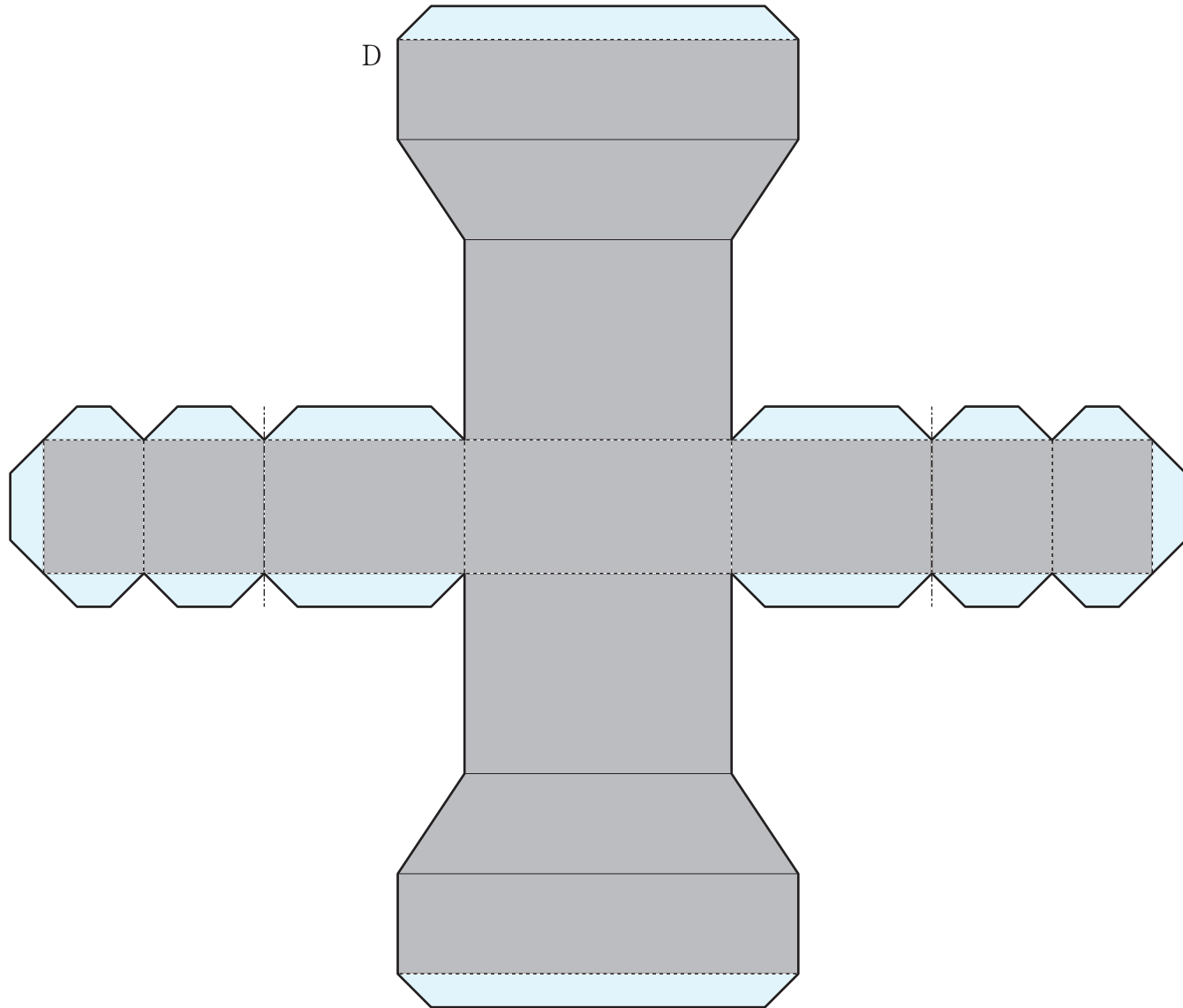


C

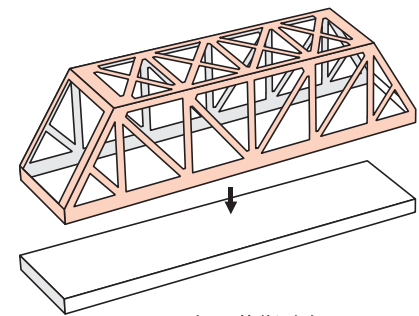
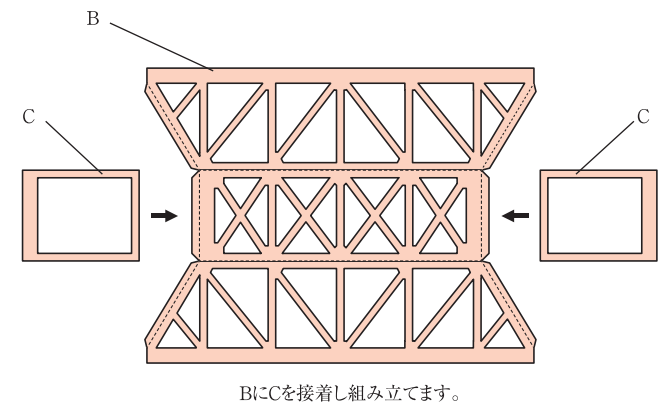
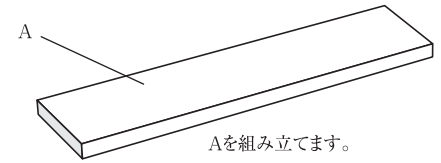


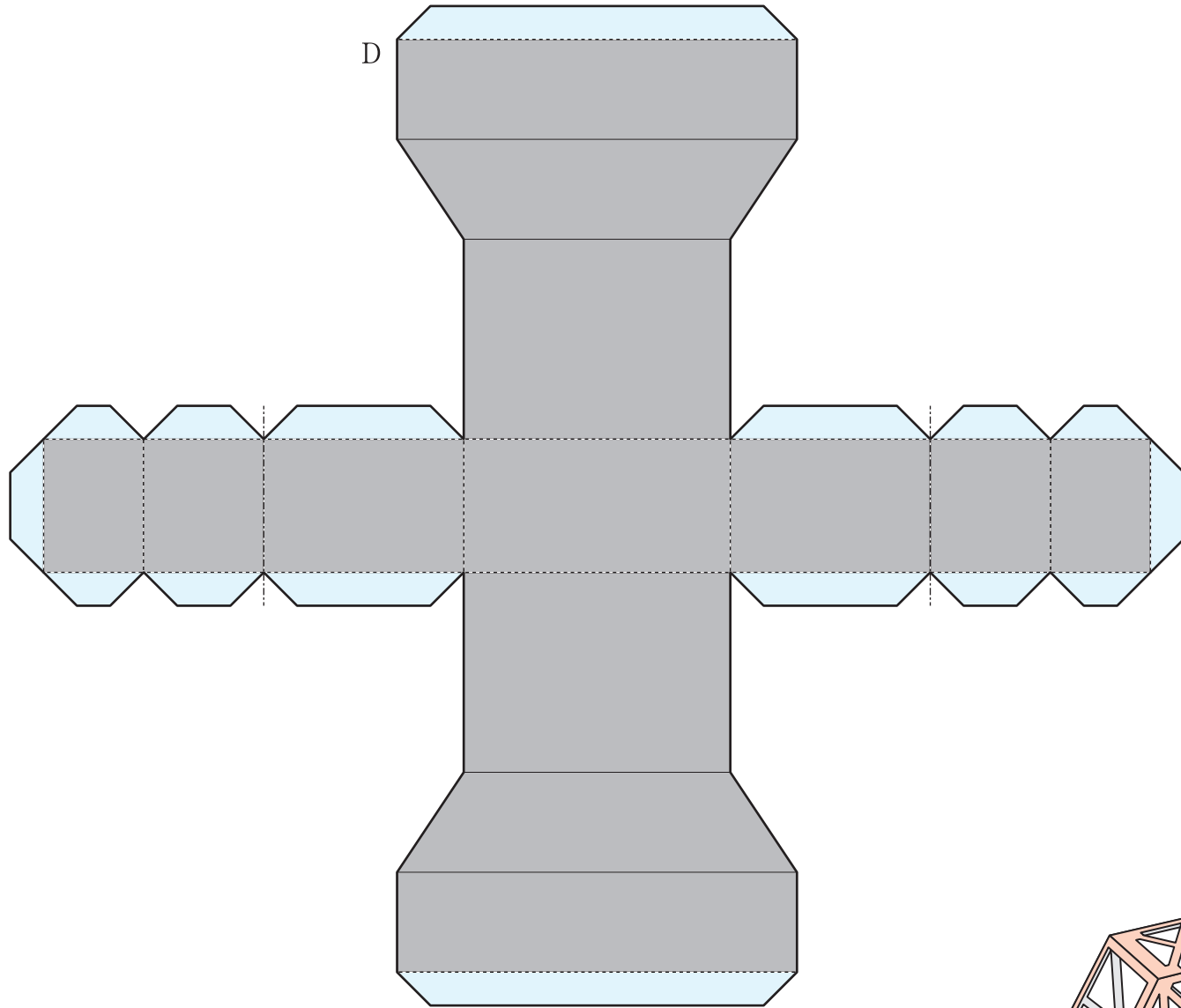
C



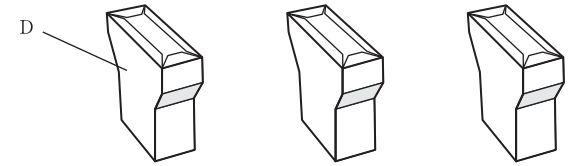


組立説明 ①

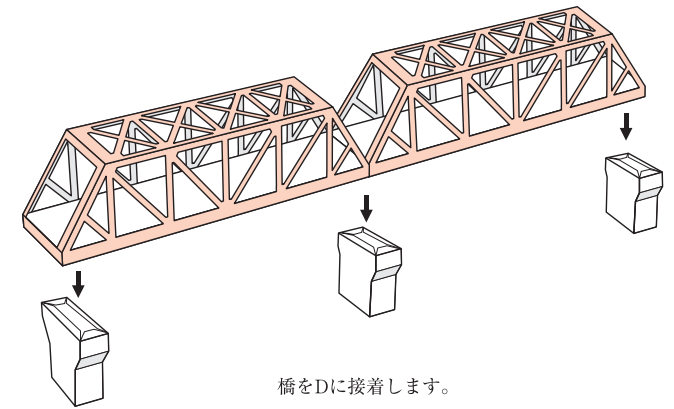




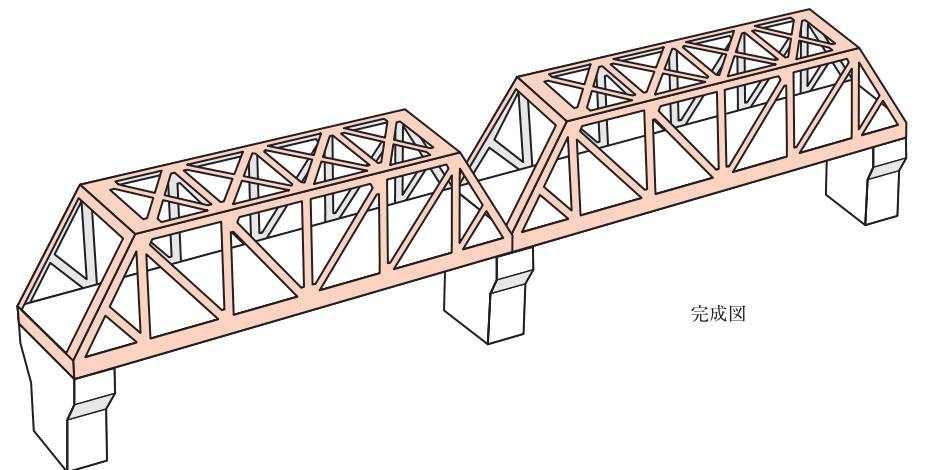
組立説明②



Dを3個組み立てます。



橋をDに接着します。



完成図