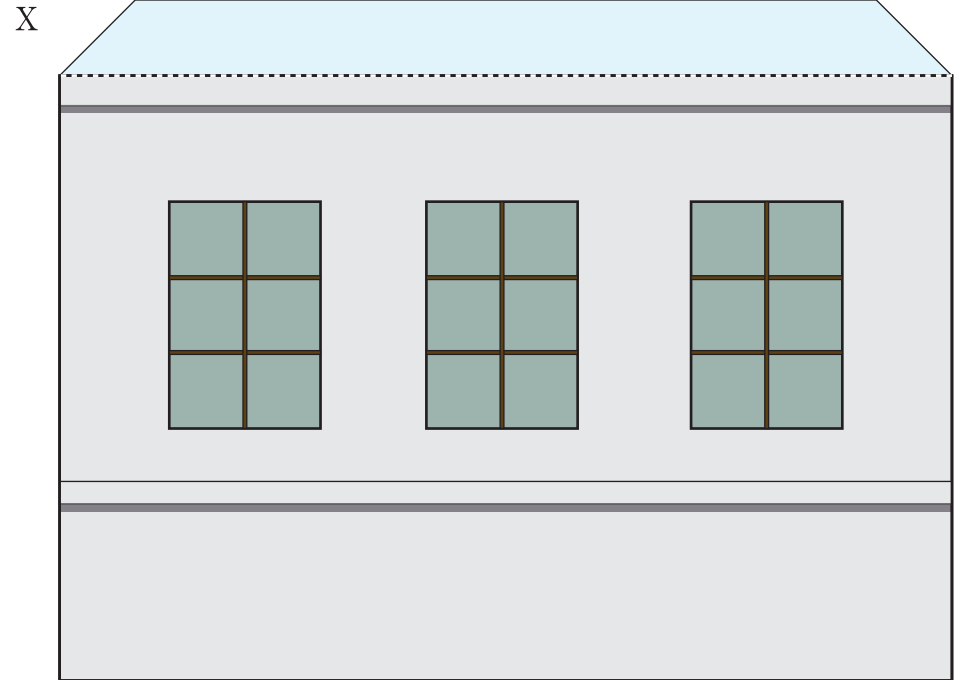
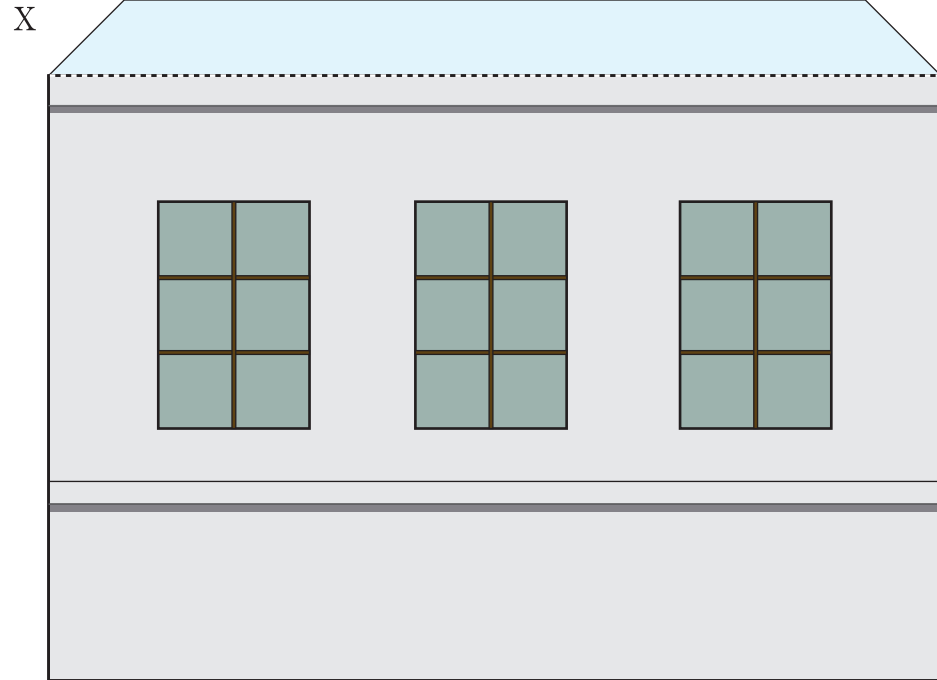
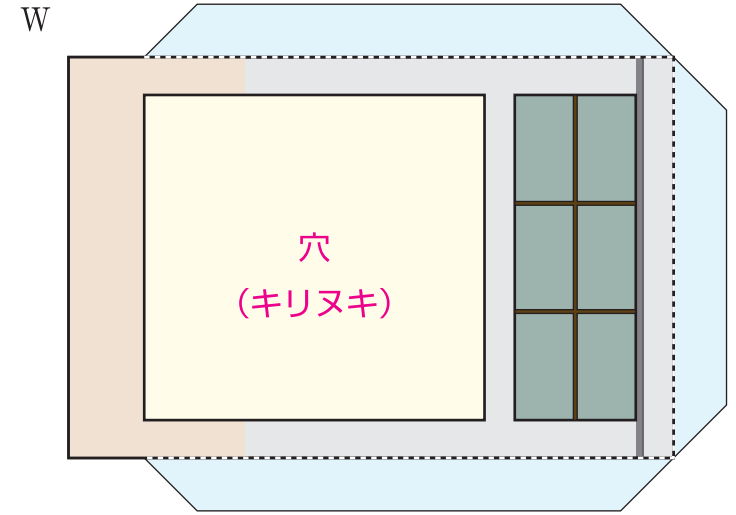
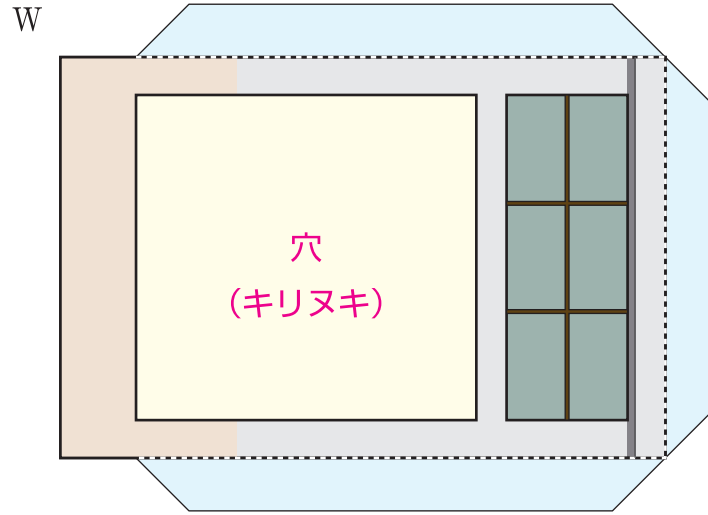
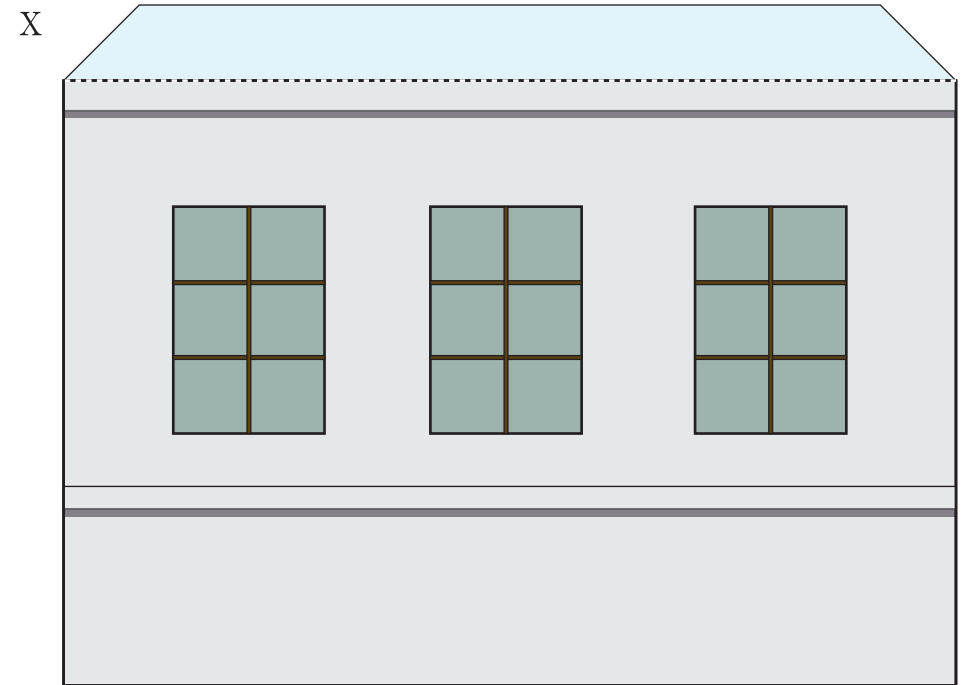
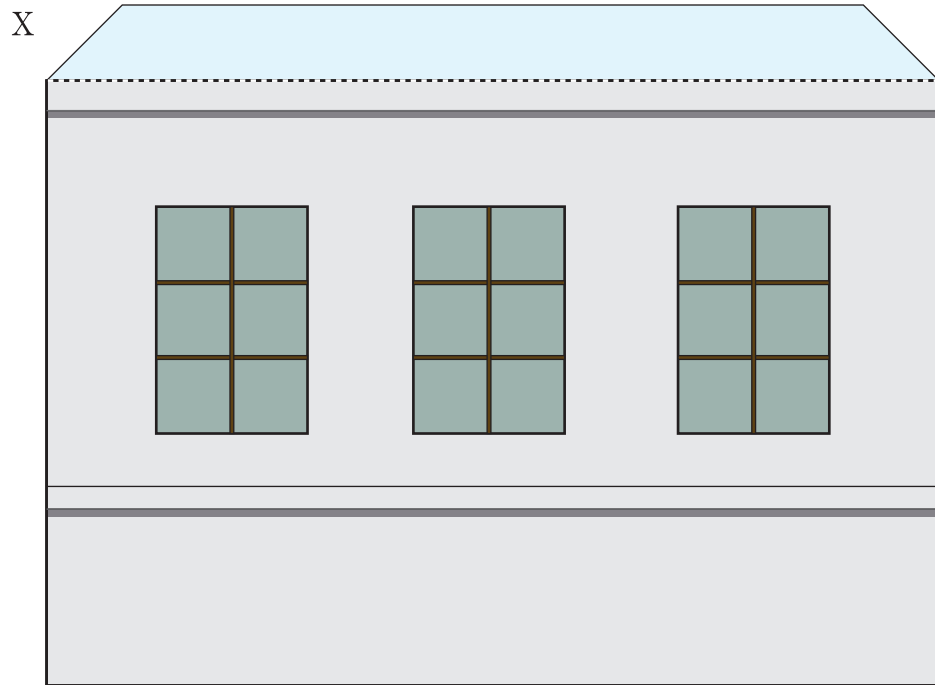
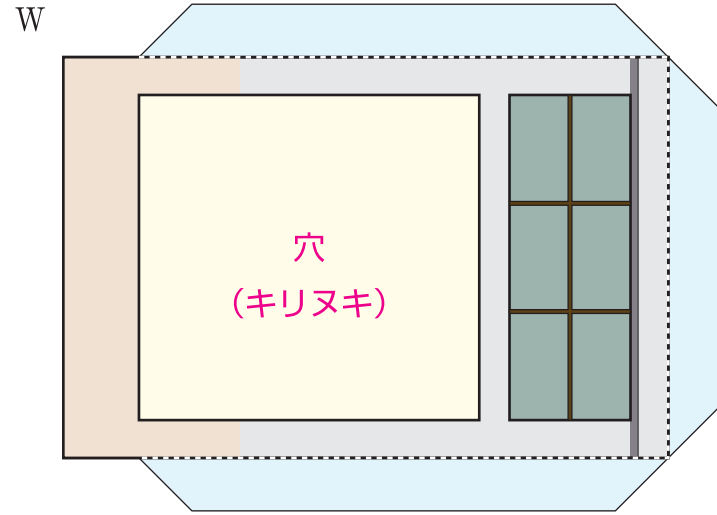
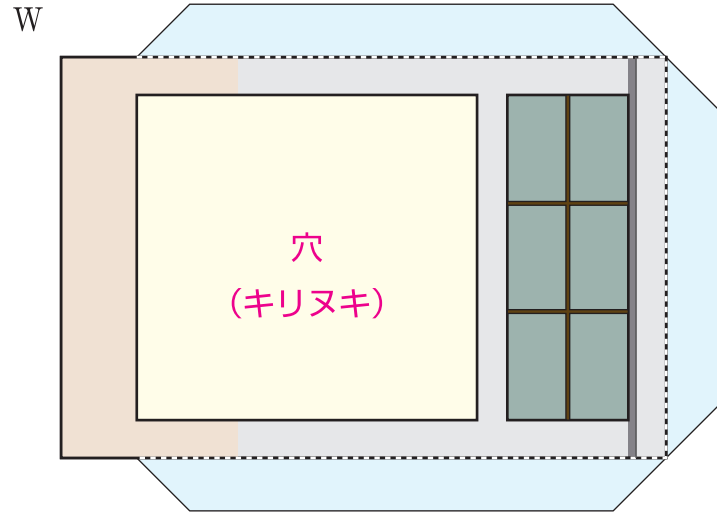
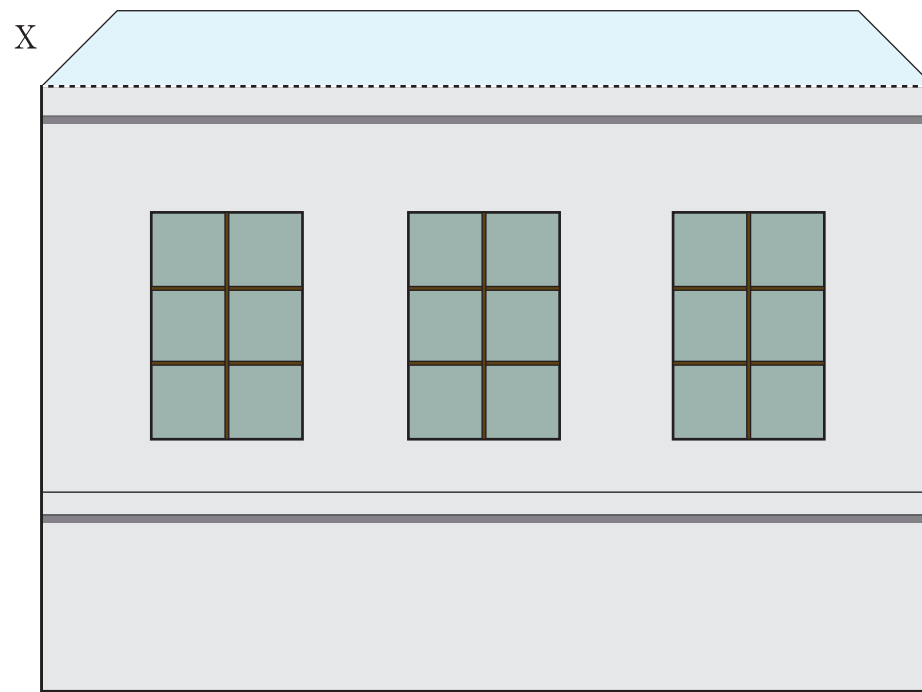
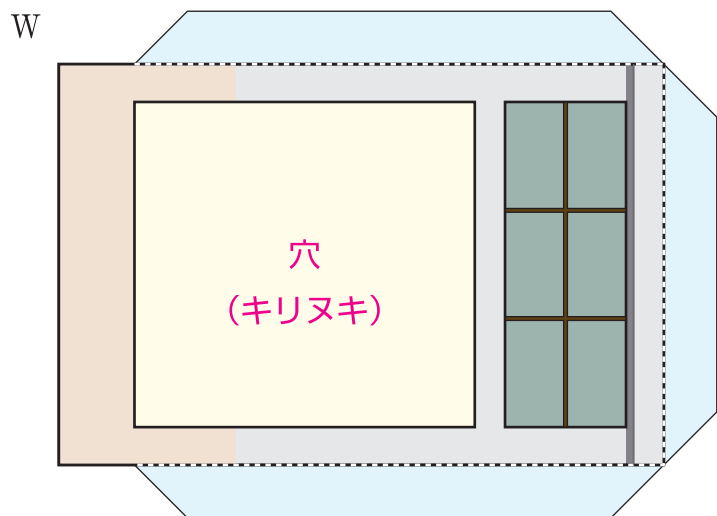


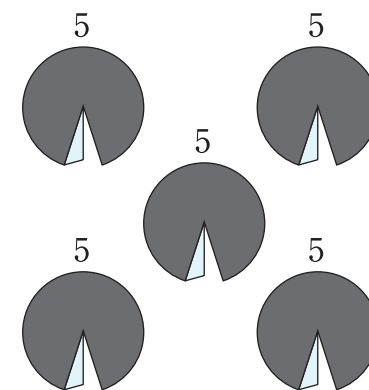
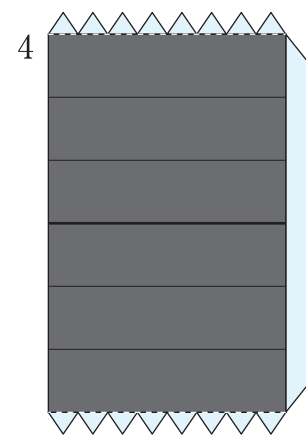
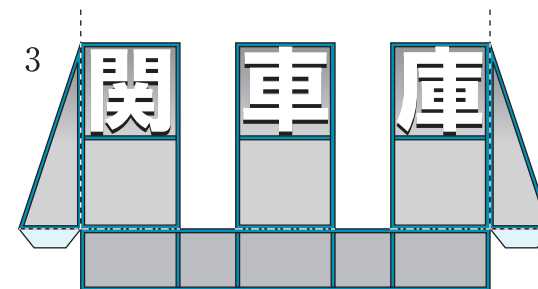
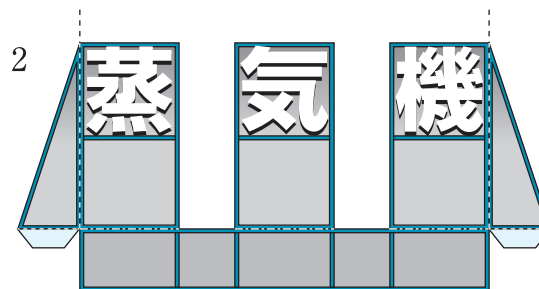
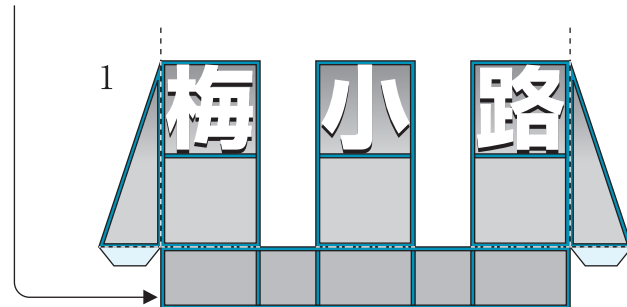
— 切り取り
- - - 山折り
- - - 谷折り
のりしろ
穴 切り抜く



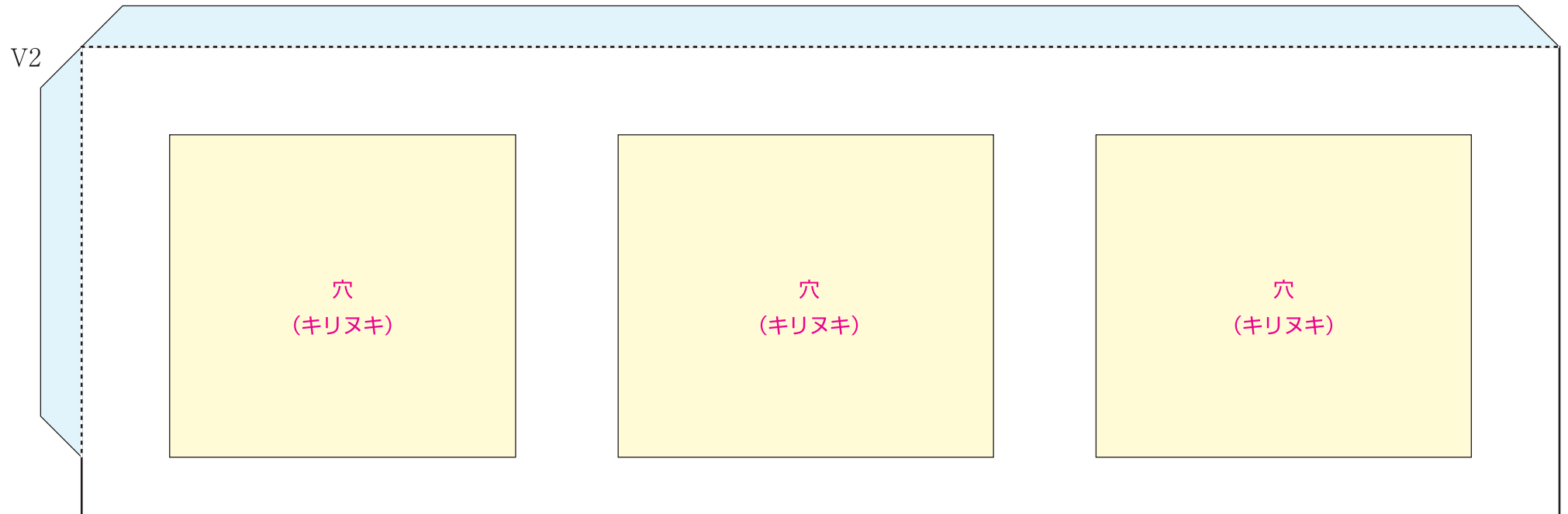


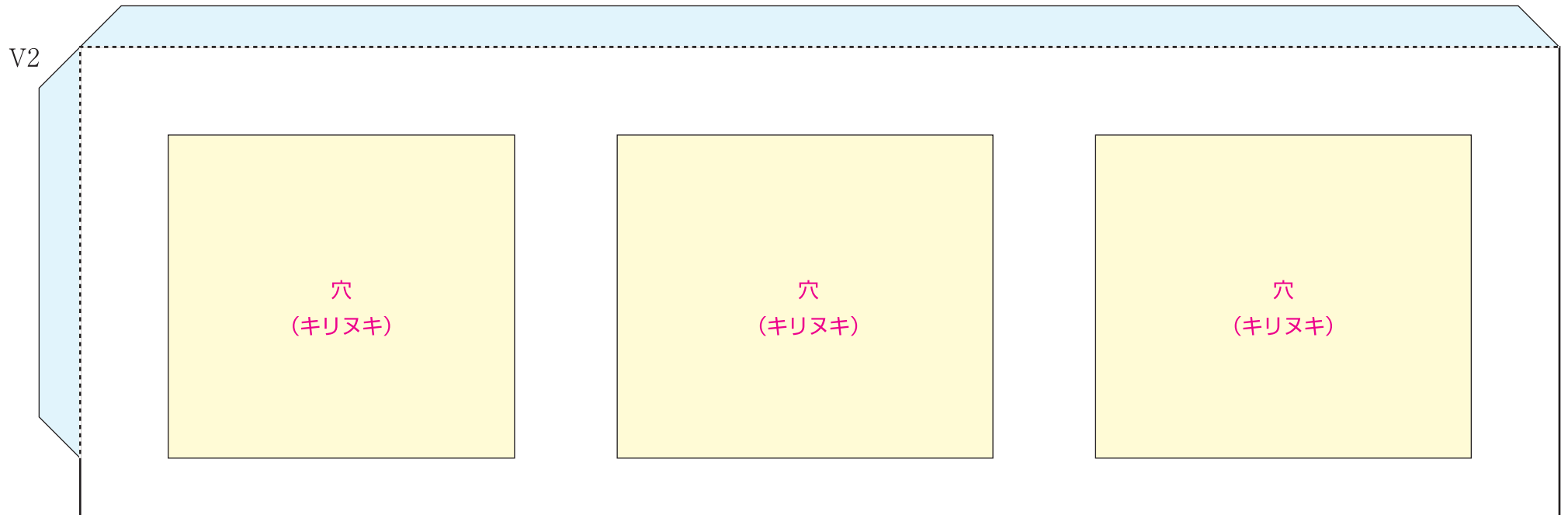
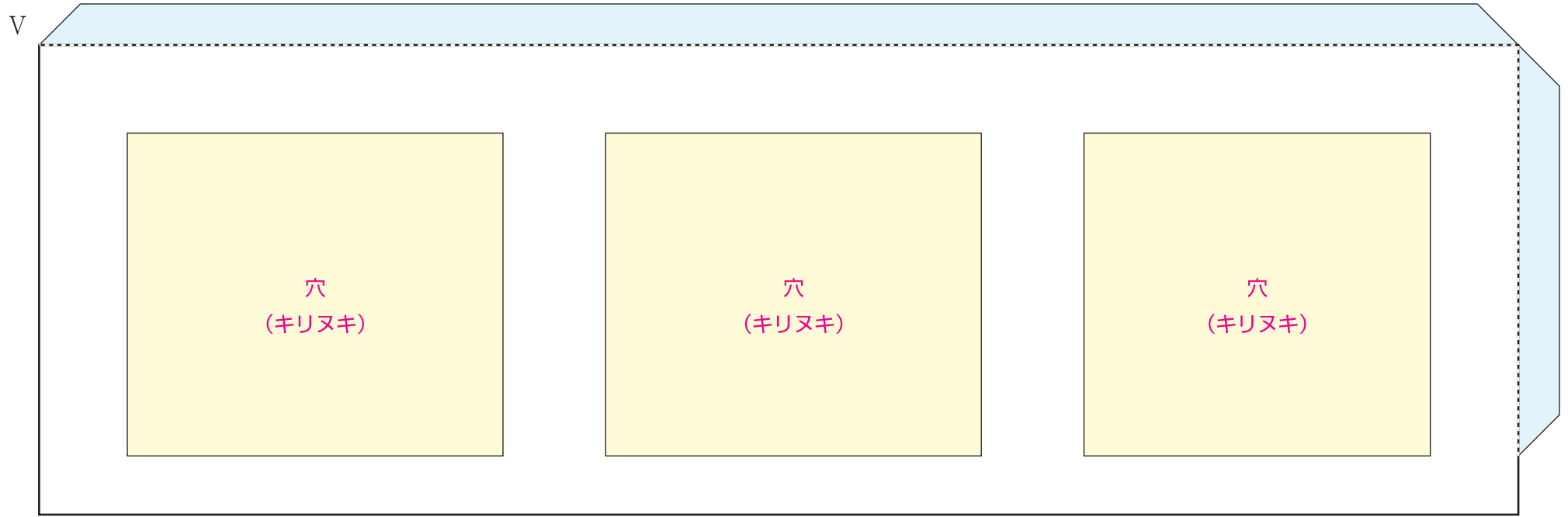


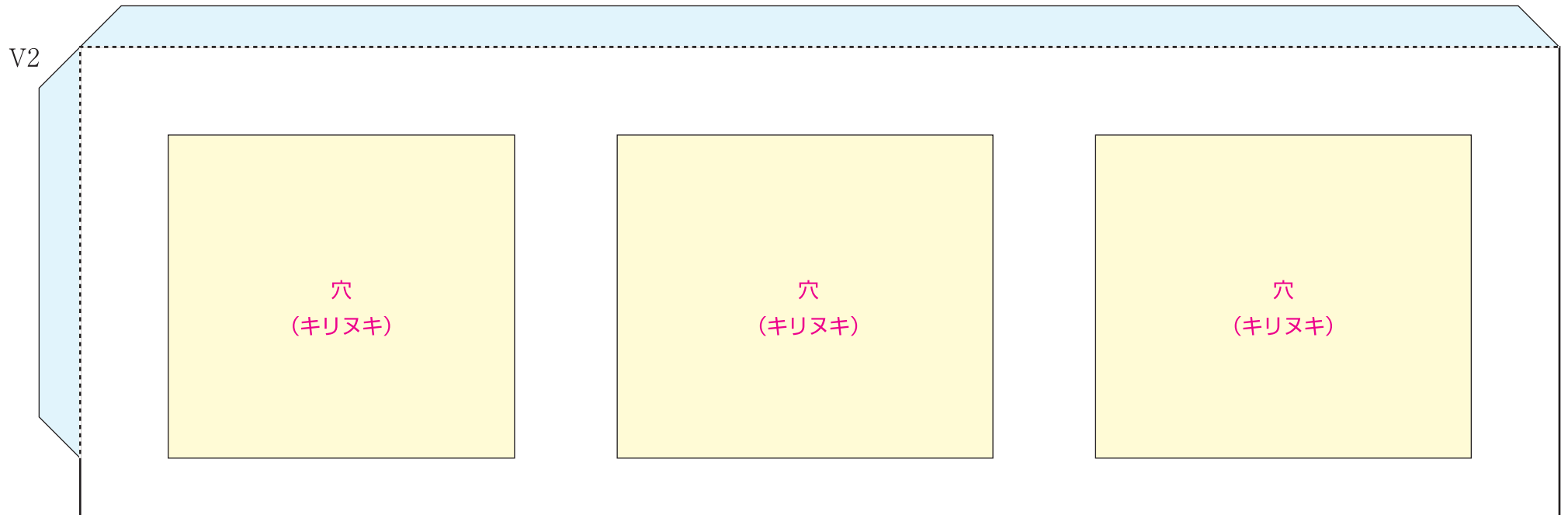
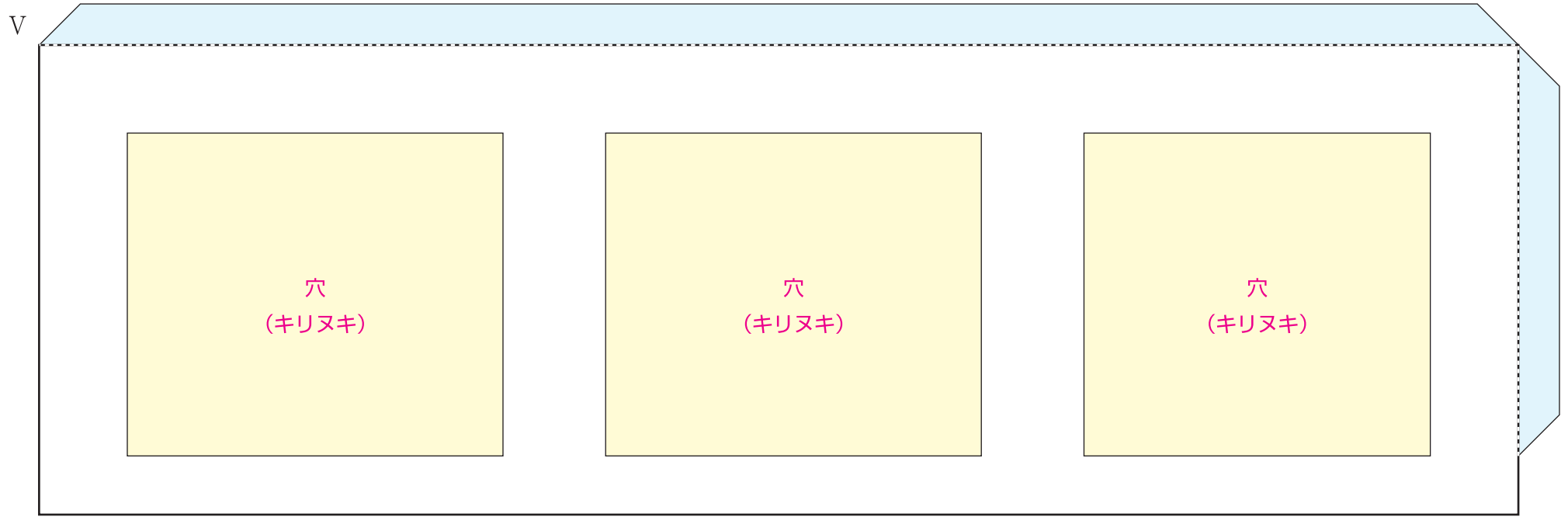
この部分の裏側に
のりを付けます。

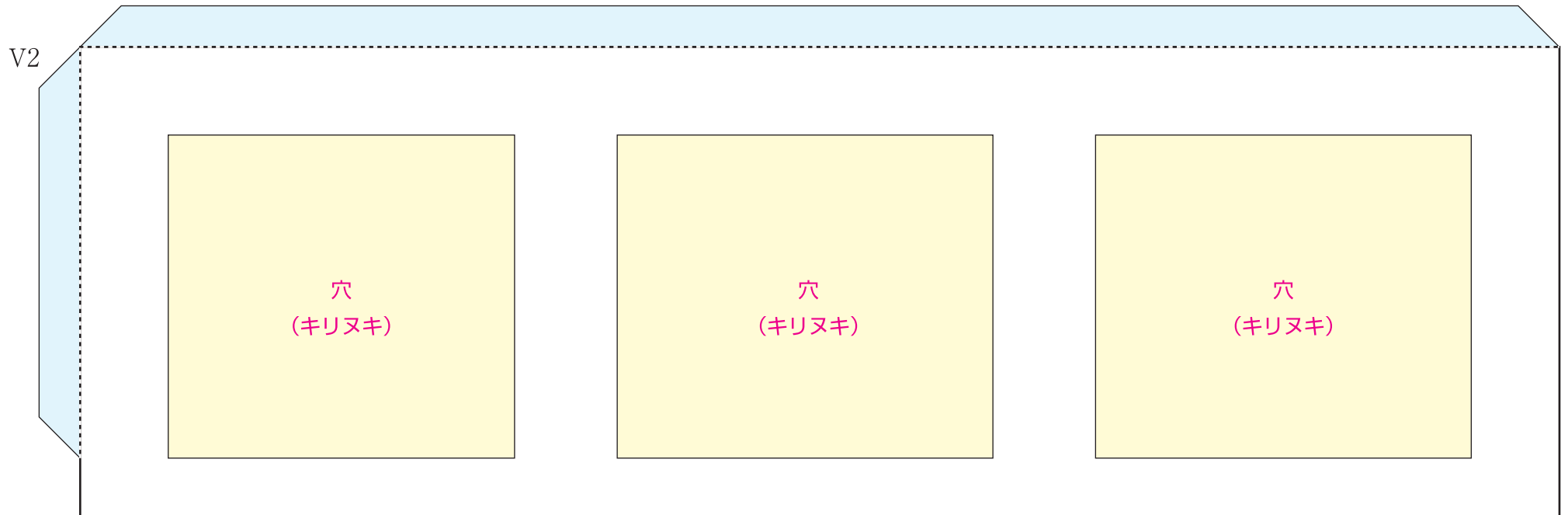
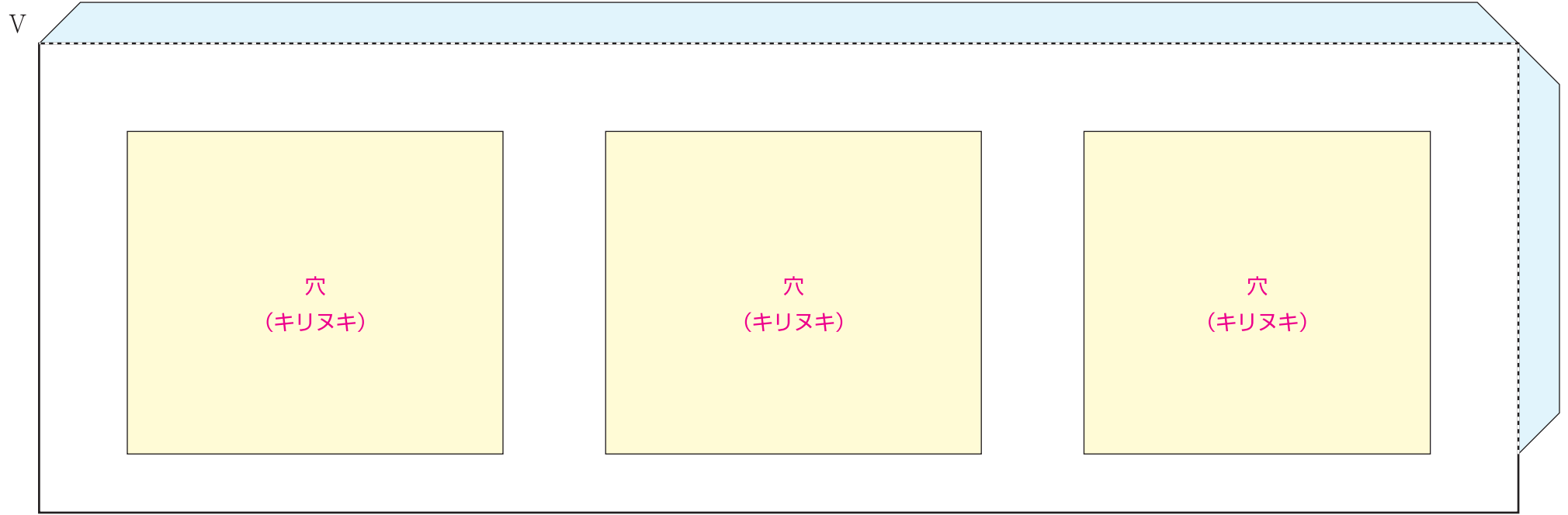


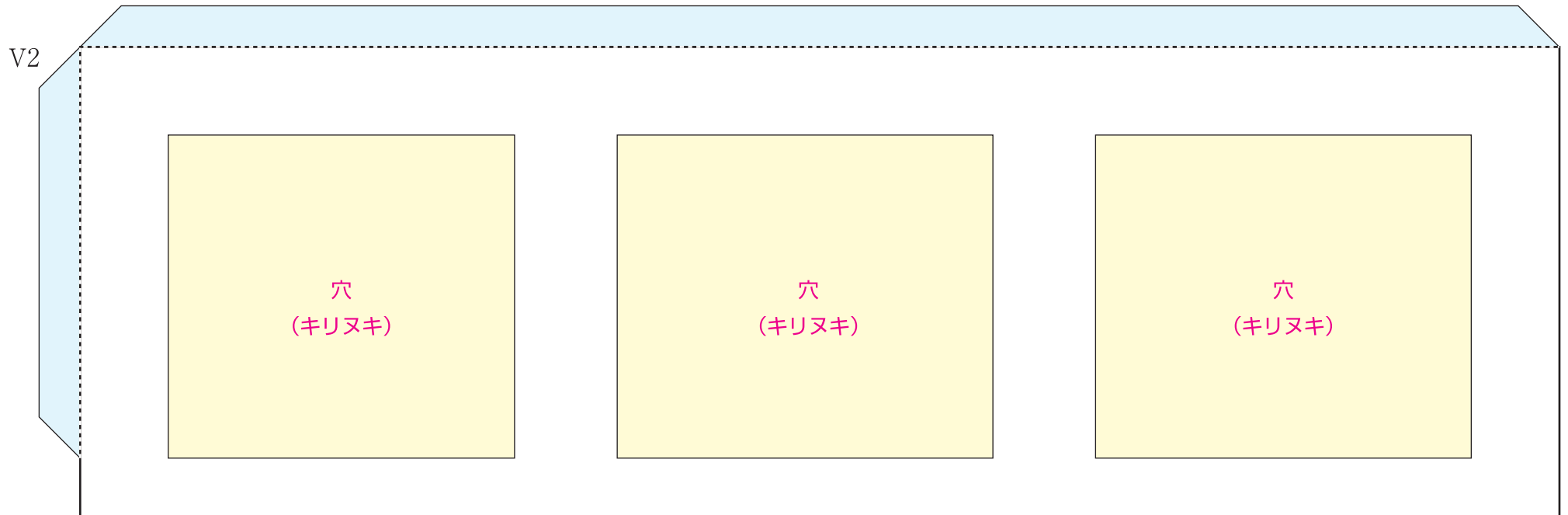
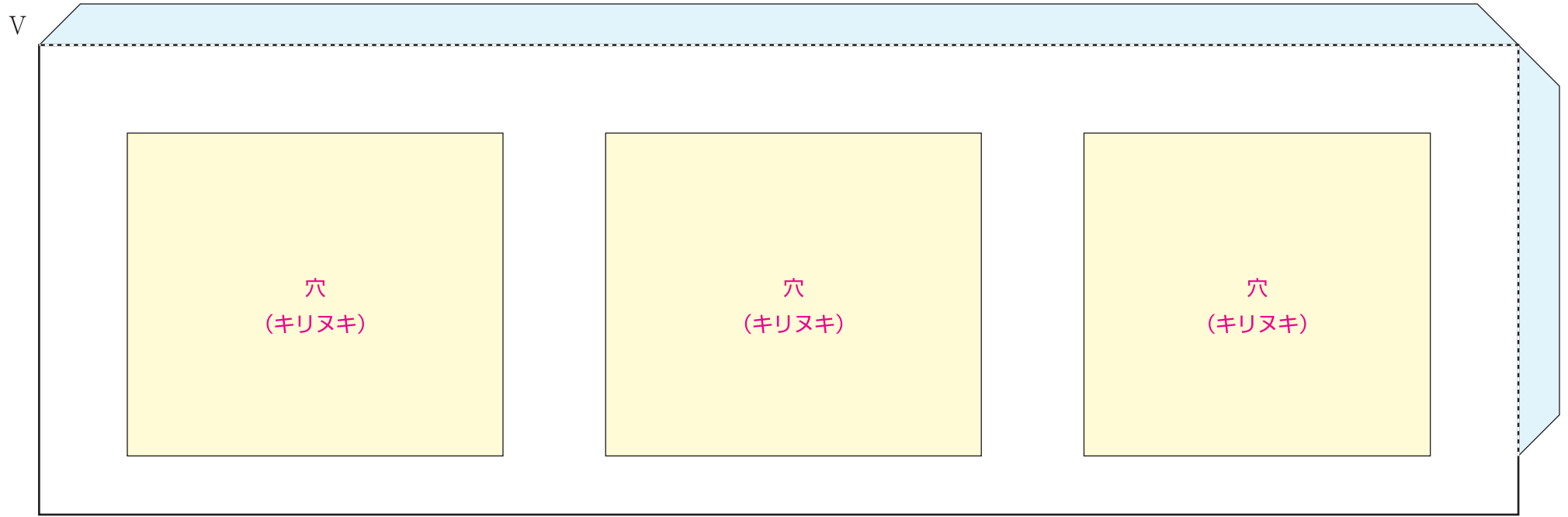
縦長の円柱になるように、横に巻いていきます。

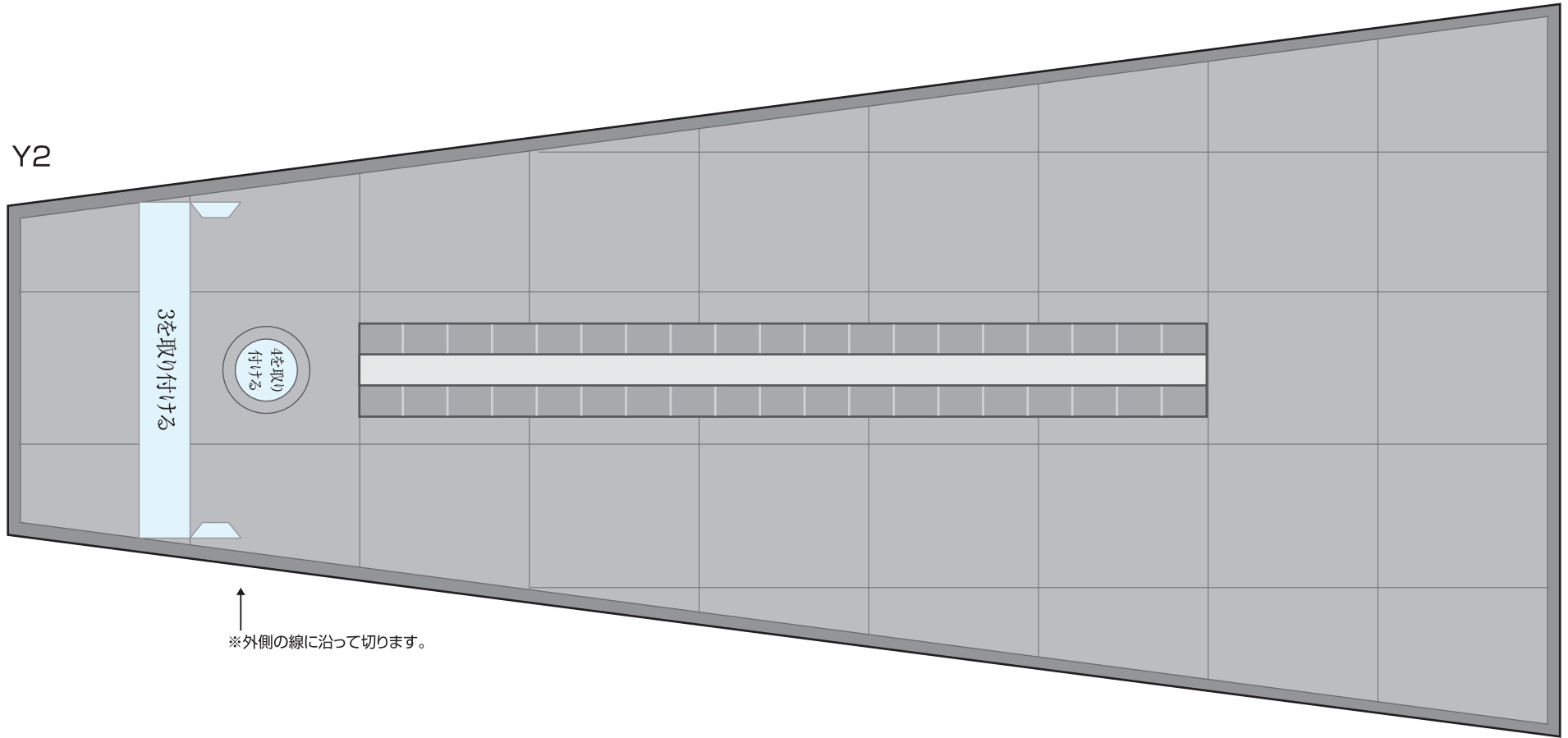


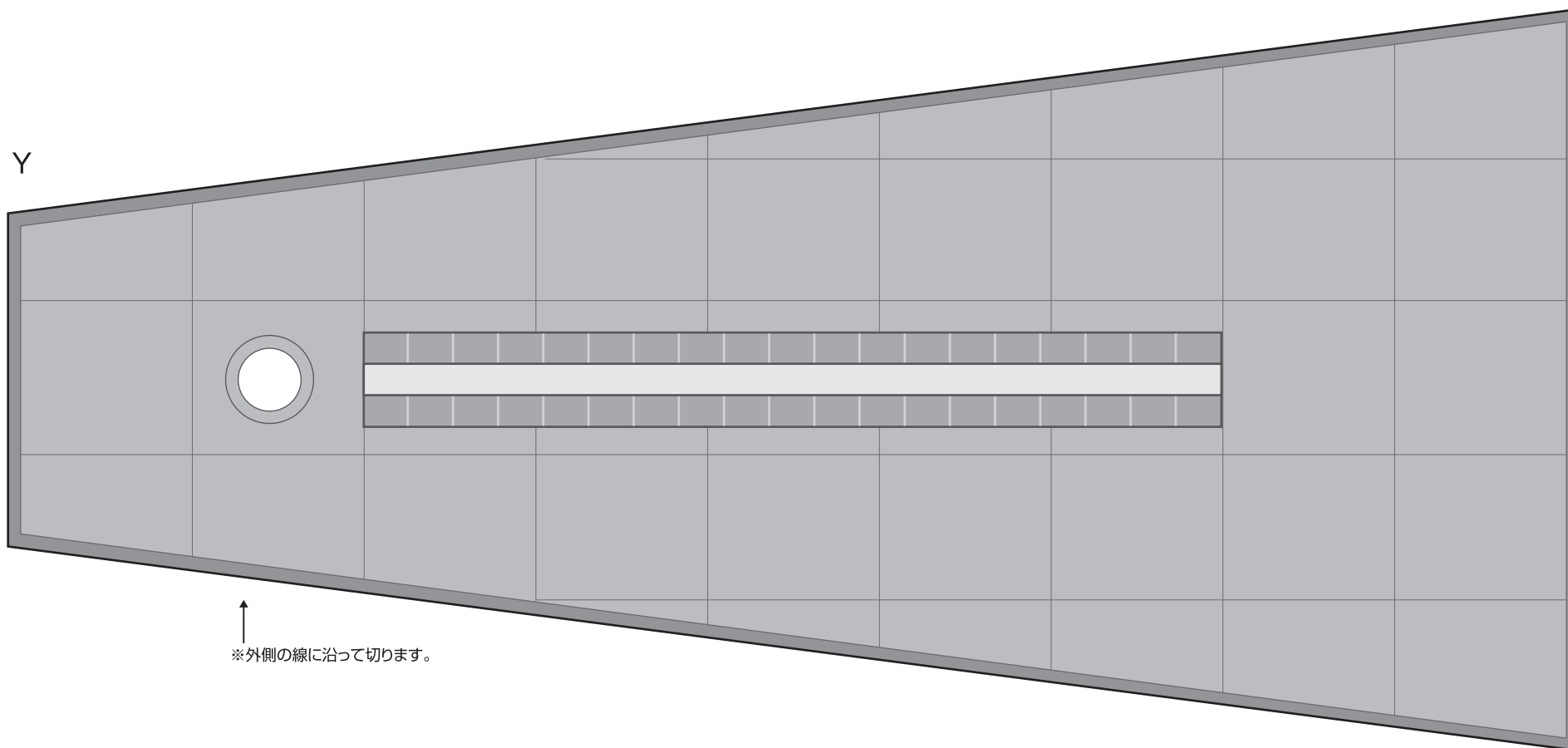




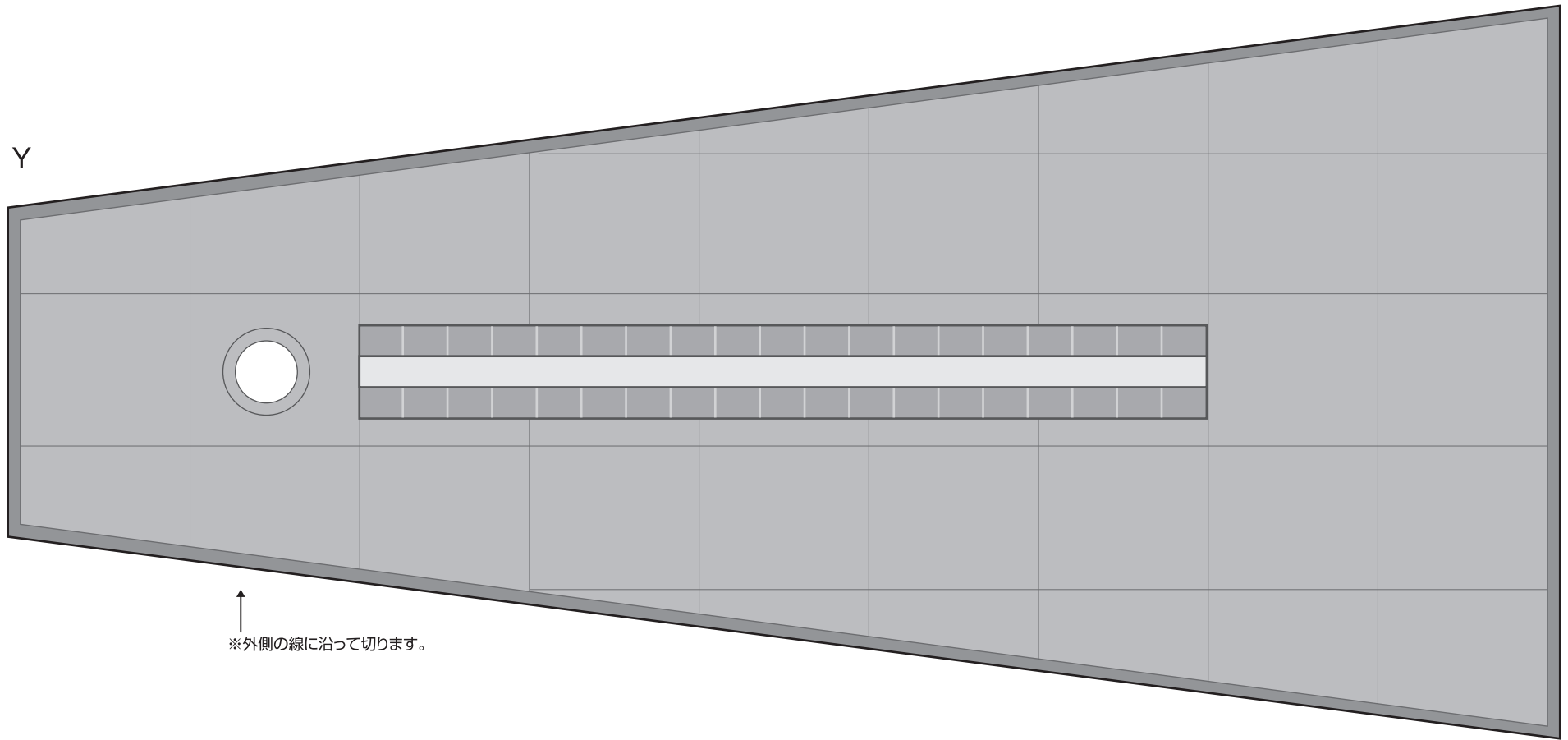




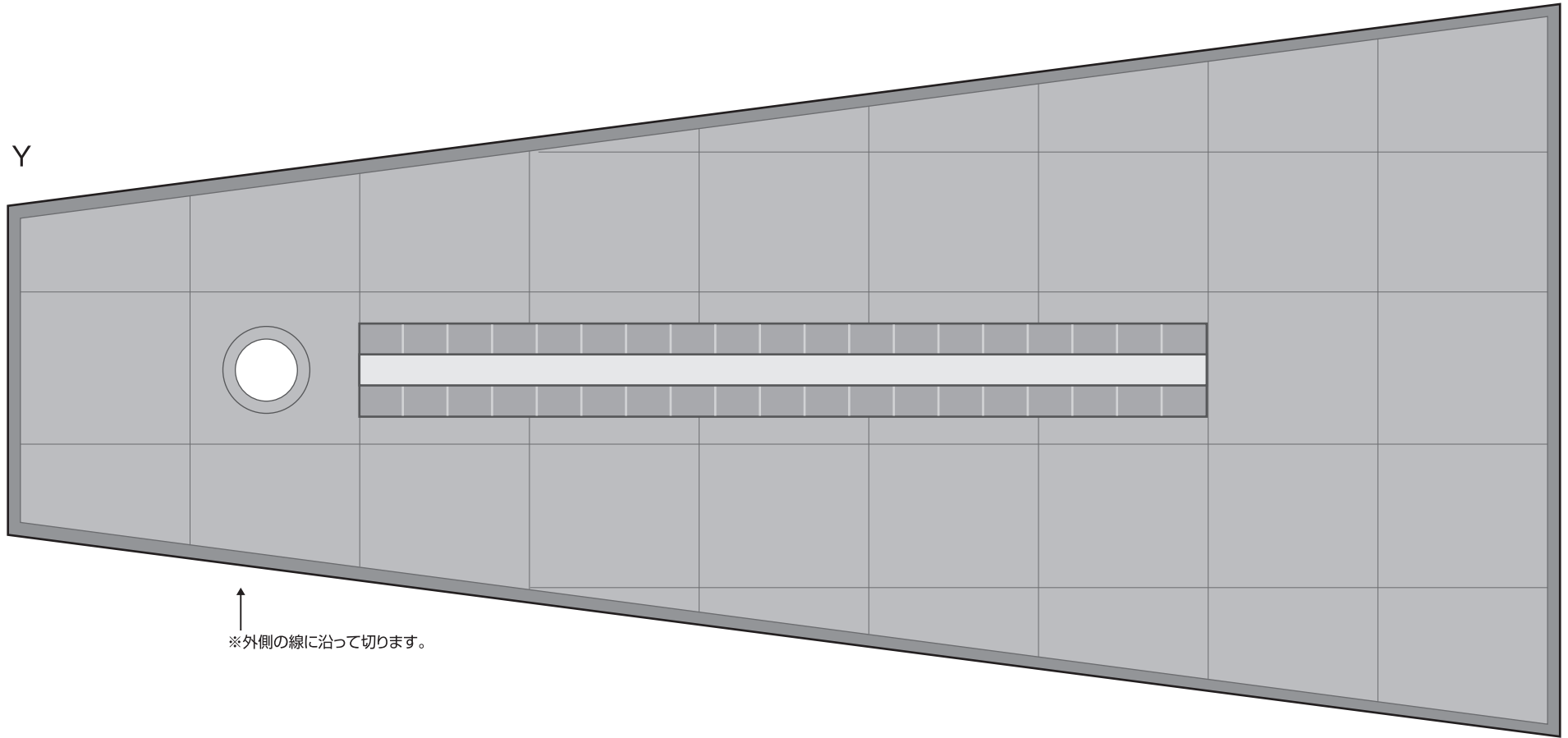


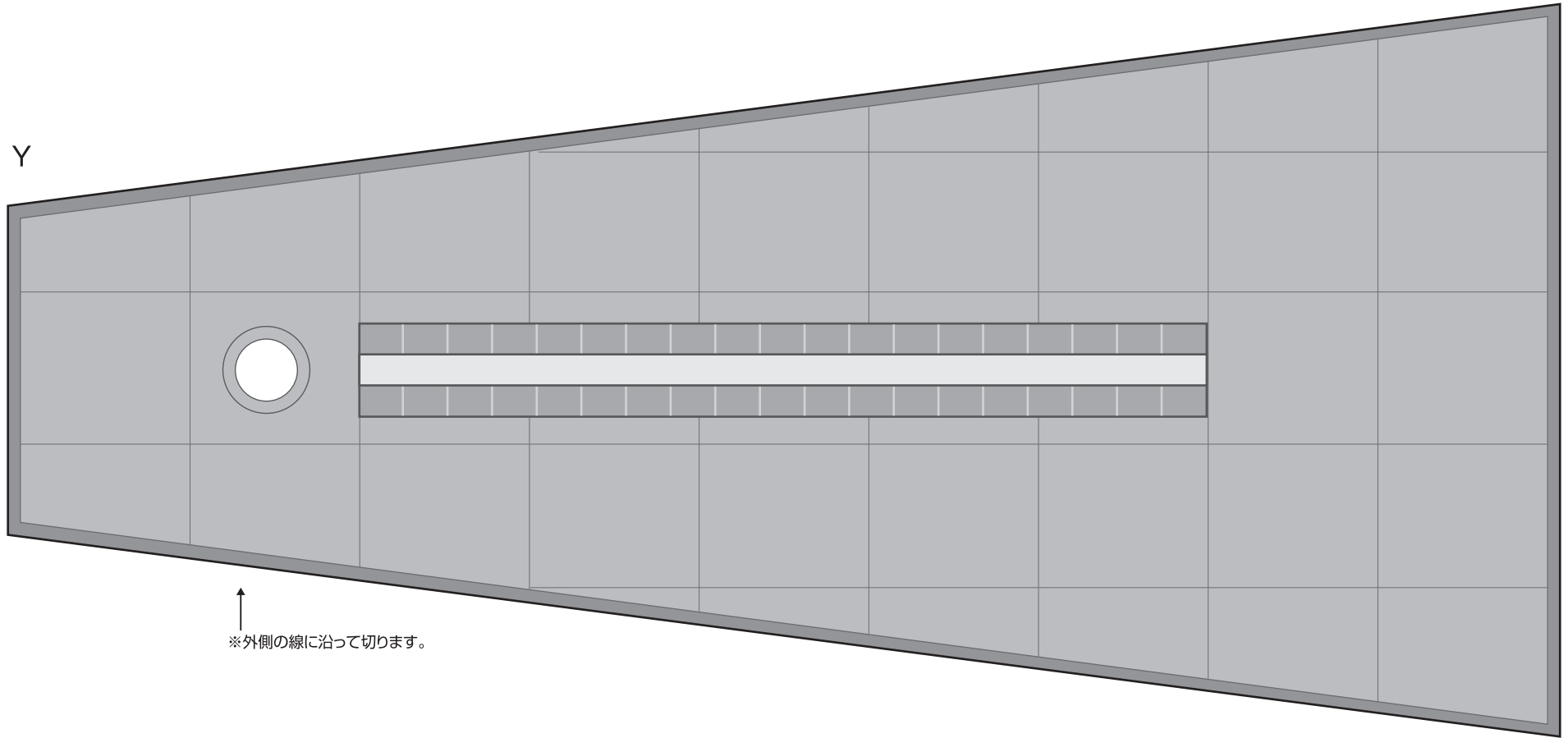


↑
※外側の線に沿って切ります。



↑
※外側の線に沿って切ります。





↑
※外側の線に沿って切ります。

